

CBX3 Antibody

Catalog No: #36926

Orders: order@signalwayantibody.com

Support: tech@signalwayantibody.com

Description

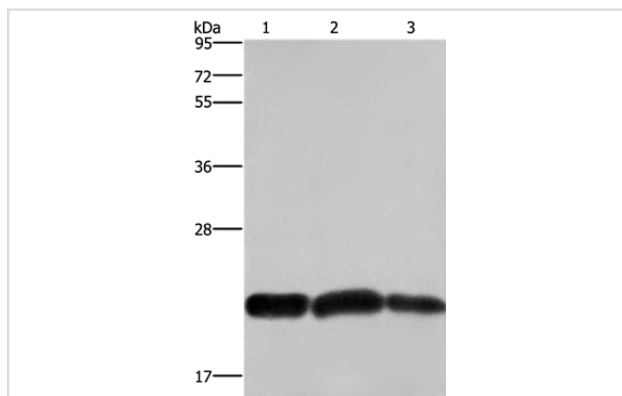
Product Name	CBX3 Antibody
Host Species	Rabbit
Clonality	Polyclonal
Purification	Antigen affinity purification.
Applications	WB IHC
Species Reactivity	Hu Ms
Specificity	The antibody detects endogenous levels of total CBX3 protein.
Immunogen Type	Peptide
Immunogen Description	Synthetic peptide corresponding to residues near the N terminal of human chromobox homolog 3
Target Name	CBX3
Other Names	HECH; HP1-GAMMA; HP1Hs-gamma
Accession No.	Swiss-Prot#: Q13185NCBI Gene ID: 11335Gene Accssion: NP_009207
Uniprot	Q13185
GeneID	11335;
SDS-PAGE MW	21kd
Concentration	2.4mg/ml
Formulation	Rabbit IgG in pH7.4 PBS, 0.05% NaN ₃ , 40% Glycerol.
Storage	Store at -20°C

Application Details

Western blotting: 1:500-1:2000

Immunohistochemistry: 1:50-1:200

Images



Gel: 10%SDS-PAGE

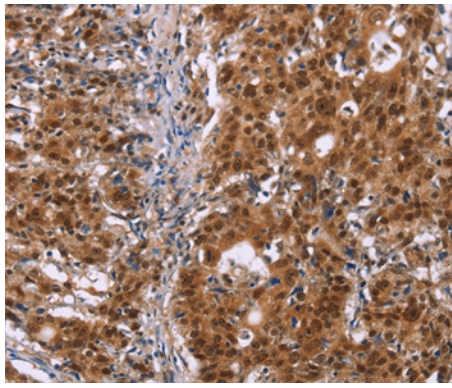
Lysates (from left to right): A375 and Raji cell, human fetal brain tissue

Amount of lysate: 40ug per lane

Primary antibody: 1/600 dilution

Secondary antibody dilution: 1/8000

Exposure time: 1 second



Immunohistochemical analysis of paraffin-embedded Human gastric cancer tissue using #36926 at dilution 1/40.

Background

At the nuclear envelope, the nuclear lamina and heterochromatin are adjacent to the inner nuclear membrane. The protein encoded by this gene binds DNA and is a component of heterochromatin. This protein also can bind lamin B receptor, an integral membrane protein found in the inner nuclear membrane. The dual binding functions of the encoded protein may explain the association of heterochromatin with the inner nuclear membrane. This protein binds histone H3 tails methylated at Lys-9 sites. This protein is also recruited to sites of ultraviolet-induced DNA damage and double-strand breaks.?

Note: This product is for in vitro research use only