

IRF1 Antibody

Catalog No: #36934

Orders: order@signalwayantibody.com

Support: tech@signalwayantibody.com

Description

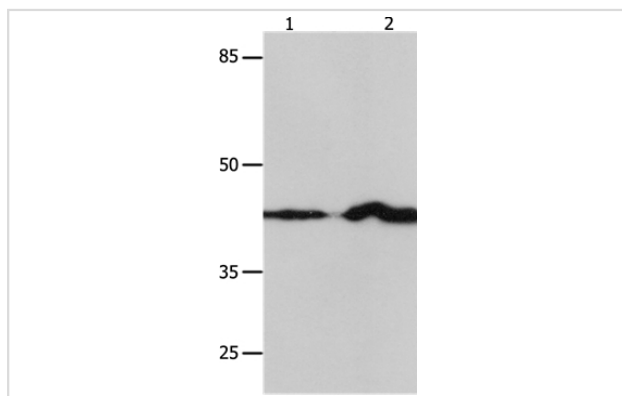
Product Name	IRF1 Antibody
Host Species	Rabbit
Clonality	Polyclonal
Purification	Antigen affinity purification.
Applications	WB IHC
Species Reactivity	Hu Ms
Specificity	The antibody detects endogenous levels of total IRF1 protein.
Immunogen Type	Peptide
Immunogen Description	Synthetic peptide corresponding to a region derived from internal residues of human interferon regulatory factor 1
Target Name	IRF1
Other Names	MAR; IRF-1
Accession No.	Swiss-Prot#: P10914NCBI Gene ID: 3659Gene Accssion: NP_002189
Uniprot	P10914
GeneID	3659;
SDS-PAGE MW	37kd
Concentration	1.5mg/ml
Formulation	Rabbit IgG in pH7.4 PBS, 0.05% NaN ₃ , 40% Glycerol.
Storage	Store at -20°C

Application Details

Western blotting: 1:500-1:2000

Immunohistochemistry: 1:50-1:200

Images



Gel: 12%SDS-PAGE

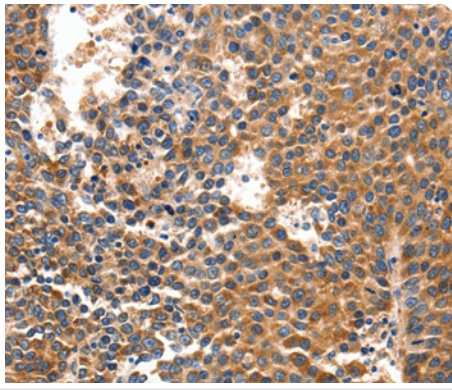
Lysates (from left to right): NIH/3T3 and Jurkat cell

Amount of lysate: 30ug per lane

Primary antibody: 1/750 dilution

Secondary antibody dilution: 1/8000

Exposure time: 1 minute



Immunohistochemical analysis of paraffin-embedded Human liver cancer tissue using #36934 at dilution 1/40.

Background

IRF1 encodes interferon regulatory factor 1, a member of the interferon regulatory transcription factor (IRF) family. IRF1 serves as an activator of interferons alpha and beta transcription, and in mouse it has been shown to be required for double-stranded RNA induction of these genes. IRF1 also functions as a transcription activator of genes induced by interferons alpha, beta, and gamma. Further, IRF1 has been shown to play roles in regulating apoptosis and tumor-suppression.

Note: This product is for in vitro research use only