

IRF7 Antibody

Catalog No: #36935

Orders: order@signalwayantibody.comSupport: tech@signalwayantibody.com

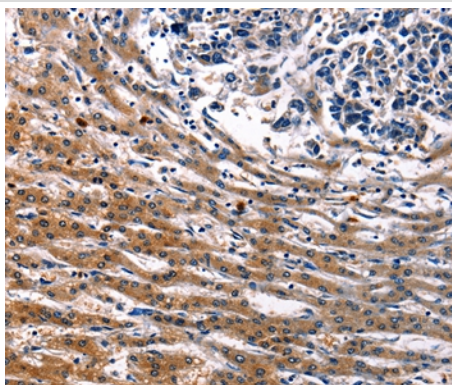
Description

Product Name	IRF7 Antibody
Host Species	Rabbit
Clonality	Polyclonal
Purification	Antigen affinity purification.
Applications	IHC
Species Reactivity	Hu
Specificity	The antibody detects endogenous levels of total IRF7 protein.
Immunogen Type	Peptide
Immunogen Description	Synthetic peptide corresponding to residues near the C terminal of human interferon regulatory factor 7
Target Name	IRF7
Other Names	IRF7A; IRF-7H
Accession No.	Swiss-Prot#: Q92985NCBI Gene ID: 3665Gene Accssion: NP_001563
Uniprot	Q92985
GeneID	3665;
Concentration	0.4mg/ml
Formulation	Rabbit IgG in pH7.4 PBS, 0.05% NaN ₃ , 40% Glycerol.
Storage	Store at -20°C

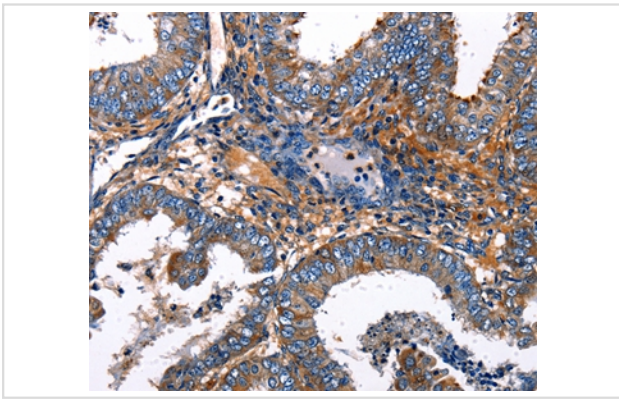
Application Details

Immunohistochemistry: 1:10-1:50

Images



Immunohistochemical analysis of paraffin-embedded Human liver cancer tissue using #36935 at dilution 1/15.



Immunohistochemical analysis of paraffin-embedded Human breast cancer tissue using #36935 at dilution 1/15.

Background

IRF7 encodes interferon regulatory factor 7, a member of the interferon regulatory transcription factor (IRF) family. IRF7 has been shown to play a role in the transcriptional activation of virus-inducible cellular genes, including interferon beta chain genes. Inducible expression of IRF7 is largely restricted to lymphoid tissue. Multiple IRF7 transcript variants have been identified, although the functional consequences of these have not yet been established.

Note: This product is for in vitro research use only