

IRS4 Antibody

Catalog No: #36937

Orders: order@signalwayantibody.comSupport: tech@signalwayantibody.com

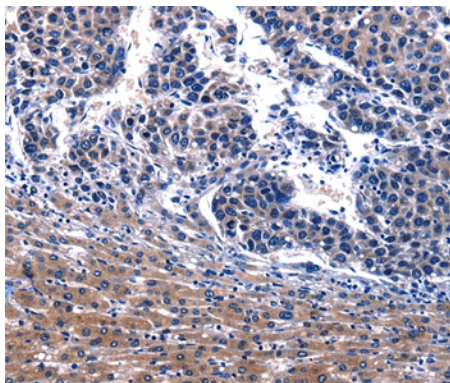
Description

Product Name	IRS4 Antibody
Host Species	Rabbit
Clonality	Polyclonal
Purification	Antigen affinity purification.
Applications	IHC
Species Reactivity	Hu
Specificity	The antibody detects endogenous levels of total IRS4 protein.
Immunogen Type	Peptide
Immunogen Description	Synthetic peptide corresponding to residues near the C terminal of human insulin receptor substrate 4
Target Name	IRS4
Other Names	IRS-4; PY160
Accession No.	Swiss-Prot#: O14654NCBI Gene ID: 8471Gene Accssion: NP_003595
Uniprot	O14654
GeneID	8471;
Concentration	0.7mg/ml
Formulation	Rabbit IgG in pH7.4 PBS, 0.05% NaN ₃ , 40% Glycerol.
Storage	Store at -20°C

Application Details

Immunohistochemistry: 1:20-1:100

Images



Immunohistochemical analysis of paraffin-embedded Human liver cancer tissue using #36937 at dilution 1/17.

Background

IRS4 encodes the insulin receptor substrate 4, a cytoplasmic protein that contains many potential tyrosine and serine/threonine phosphorylation sites. Tyrosine-phosphorylated IRS4 protein has been shown to associate with cytoplasmic signalling molecules that contain SH2 domains. The IRS4 protein is phosphorylated by the insulin receptor tyrosine kinase upon receptor stimulation

Note: This product is for in vitro research use only