

KLK2 Antibody

Catalog No: #36940

Orders: order@signalwayantibody.comSupport: tech@signalwayantibody.com

Description

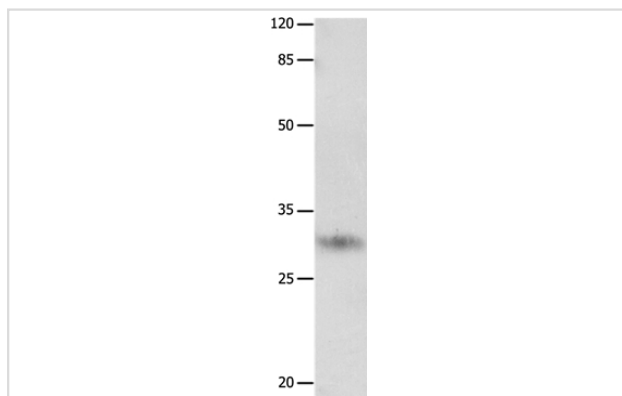
Product Name	KLK2 Antibody
Host Species	Rabbit
Clonality	Polyclonal
Purification	Antigen affinity purification.
Applications	WB IHC
Species Reactivity	Hu
Specificity	The antibody detects endogenous levels of total KLK2 protein.
Immunogen Type	Peptide
Immunogen Description	Synthetic peptide corresponding to residues near the C terminal of human kallikrein-related peptidase 2
Target Name	KLK2
Other Names	hK2; hGK-1; KLK2A2
Accession No.	Swiss-Prot#: P20151NCBI Gene ID: 3817Gene Accssion: NP_005542
Uniprot	P20151
GeneID	3817;
SDS-PAGE MW	29kd
Concentration	3.3mg/ml
Formulation	Rabbit IgG in pH7.4 PBS, 0.05% NaN ₃ , 40% Glycerol.
Storage	Store at -20°C

Application Details

Western blotting: 1:500-1:2000

Immunohistochemistry: 1:100-1:300

Images

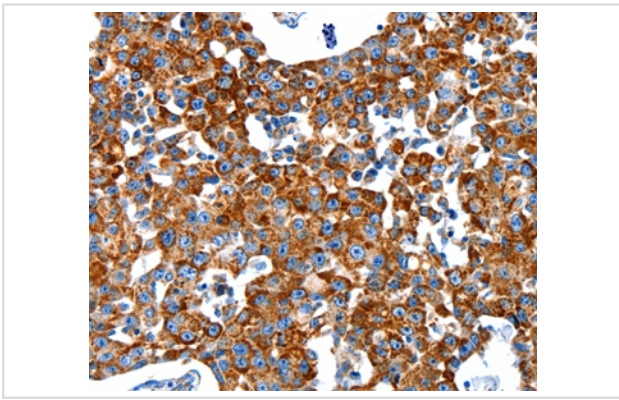


Gel: 10%SDS-PAGE

Lysate: 40ug Hela cell Primary antibody: 1/1650 dilution

Secondary antibody dilution: 1/8000

Exposure time: 2 minutes



Immunohistochemical analysis of paraffin-embedded Human breast cancer tissue using #36940 at dilution 1/80.

Background

This gene encodes a member of the granular kallikrein protein family. Kallikreins are a subgroup of serine proteases that are clustered on chromosome 19. Members of this family are involved in a diverse array of biological functions. The protein encoded by this gene is a highly active trypsin-like serine protease that selectively cleaves at arginine residues. This protein is primarily expressed in prostatic tissue and is responsible for cleaving pro-prostate-specific antigen into its enzymatically active form. This gene is highly expressed in prostate tumor cells and may be a prognostic marker for prostate cancer risk. Alternate splicing results in both coding and non-coding transcript variants.

Note: This product is for in vitro research use only