

## KCNC2 Antibody

Catalog No: #36942

Orders: order@signalwayantibody.com

Support: tech@signalwayantibody.com

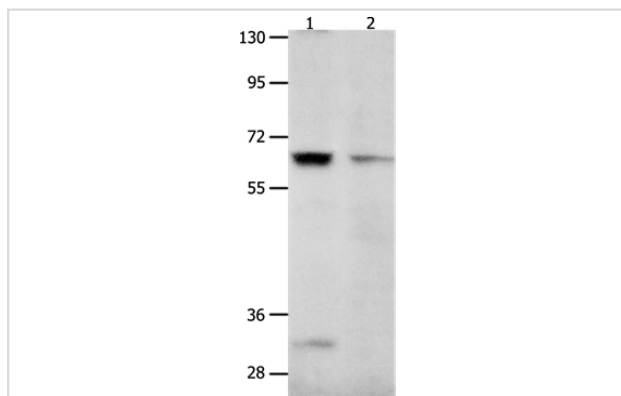
## Description

Product Name	KCNC2 Antibody
Host Species	Rabbit
Clonality	Polyclonal
Purification	Antigen affinity purification.
Applications	WB
Species Reactivity	Hu Ms Rt
Specificity	The antibody detects endogenous levels of total KCNC2 protein.
Immunogen Type	Peptide
Immunogen Description	Synthetic peptide corresponding to residues near the N terminal of human potassium voltage-gated channel, Shaw-related subfamily, member 2
Target Name	KCNC2
Other Names	KV3.2
Accession No.	Swiss-Prot#: Q96PR1NCBI Gene ID: 3747Gene Accssion: NP_631875
Uniprot	Q96PR1
GeneID	3747;
SDS-PAGE MW	62kd
Concentration	0.9mg/ml
Formulation	Rabbit IgG in pH7.4 PBS, 0.05% NaN <sub>3</sub> , 40% Glycerol.
Storage	Store at -20°C

## Application Details

Western blotting: 1:200-1:1000

## Images



Gel: 8%SDS-PAGE  
 Lysates (from left to right): 231 cell and human brain malignant glioma tissue  
 Amount of lysate: 50ug per lane  
 Primary antibody: 1/450 dilution  
 Secondary antibody dilution: 1/8000  
 Exposure time: 10 seconds

## Background

The Shaker gene family of Drosophila encodes components of voltage-gated potassium channels and is comprised of four subfamilies. Based on

sequence similarity, this gene is similar to one of these subfamilies, namely the Shaw subfamily. The protein encoded by this gene belongs to the delayed rectifier class of channel proteins and is an integral membrane protein that mediates the voltage-dependent potassium ion permeability of excitable membranes. Several transcript variants encoding different isoforms have been found for this gene.

---

Note: This product is for in vitro research use only