

KCNC3 Antibody

Catalog No: #36943

Orders: order@signalwayantibody.comSupport: tech@signalwayantibody.com

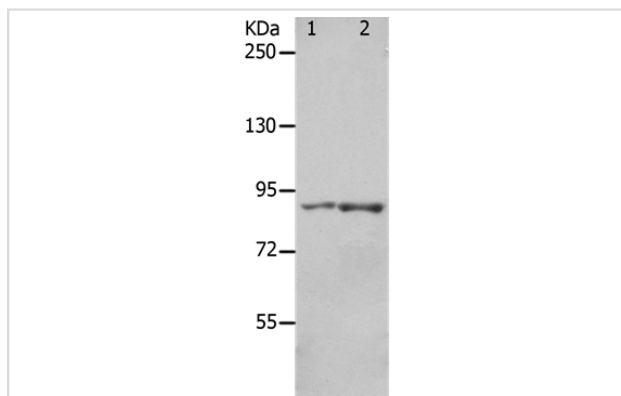
Description

Product Name	KCNC3 Antibody
Host Species	Rabbit
Clonality	Polyclonal
Purification	Antigen affinity purification.
Applications	WB
Species Reactivity	Hu Ms Rt
Specificity	The antibody detects endogenous levels of total KCNC3 protein.
Immunogen Type	Peptide
Immunogen Description	Synthetic peptide corresponding to residues near the C terminal of human potassium voltage-gated channel, Shaw-related subfamily, member 3
Target Name	KCNC3
Other Names	KV3.3; SCA13; KSHIID
Accession No.	Swiss-Prot#: Q14003NCBI Gene ID: 3748Gene Accssion: NP_004968
Uniprot	Q14003
GeneID	3748;
SDS-PAGE MW	81kd
Concentration	0.6mg/ml
Formulation	Rabbit IgG in pH7.4 PBS, 0.05% NaN ₃ , 40% Glycerol.
Storage	Store at -20°C

Application Details

Western blotting: 1:500-1:2000

Images



Gel: 8%SDS-PAGE
 Lysates (from left to right): 293T cell and mouse brain tissue
 Amount of lysate: 40ug per lane
 Primary antibody: 1/300 dilution
 Secondary antibody dilution: 1/8000
 Exposure time: 1 minute

Background

The Shaker gene family of Drosophila encodes components of voltage-gated potassium channels and is comprised of four subfamilies. Based on

sequence similarity, this gene is similar to one of these subfamilies, namely the Shaw subfamily. The protein encoded by this gene belongs to the delayed rectifier class of channel proteins and is an integral membrane protein that mediates the voltage-dependent potassium ion permeability of excitable membranes.

Note: This product is for in vitro research use only