

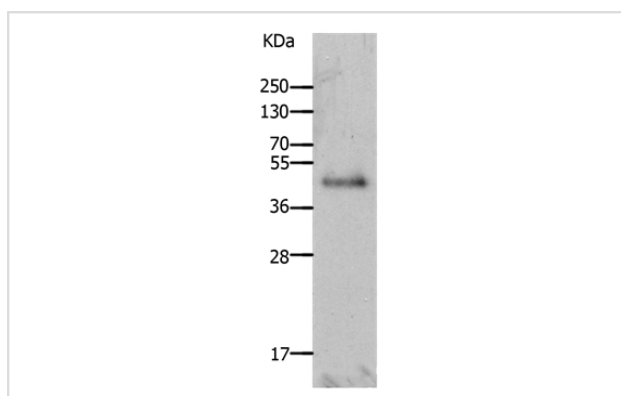
Description

Product Name	LAYN Antibody
Host Species	Rabbit
Clonality	Polyclonal
Purification	Antigen affinity purification.
Applications	WB
Species Reactivity	Hu Ms
Specificity	The antibody detects endogenous levels of total LAYN protein.
Immunogen Type	Peptide
Immunogen Description	Synthetic peptide corresponding to residues near the C terminal of human layilin
Target Name	LAYN
Other Names	FLJ30977; FLJ31092; Layilin; LAYN
Accession No.	Swiss-Prot#: Q6UX15NCBI Gene ID: 143903Gene Accssion: NP_001245319
Uniprot	Q6UX15
GeneID	143903;
SDS-PAGE MW	43kd
Concentration	0.7mg/ml
Formulation	Rabbit IgG in pH7.4 PBS, 0.05% NaN ₃ , 40% Glycerol.
Storage	Store at -20°C

Application Details

Western blotting: 1:200-1:1000

Images



Gel: 10%SDS-PAGE

Lysates (from left to right): Mouse brain tissue

Amount of lysate: 40ug per lane

Primary antibody: 1/350 dilution

Secondary antibody dilution: 1/8000

Exposure time: 1 minute

Background

Layilin is a recently cloned 75.5-kDa membrane-binding partner for talin (Borowsky and Hynes, 1998) that is widely expressed in different cell types and tissue extracts. It is found in peripheral ruffles of spreading cells and is recruited to membrane ruffles in cells induced to migrate in vitro

wounding experiments. Layilin colocalizes with talin in ruffles and binds to talin's 750-kDa head domain (amino acids 280B-C435). Other parts of talin (the 7220-kDa tail fragment) can bind β -integrin cytoplasmic tails, vinculin, and F-actin and hence form an integrin-cytoskeleton linkage at sites of cell-substratum contact. Layilin's extracellular domain is homologous with the carbohydrate-recognition domains (CRD) of C-type lectins.

Note: This product is for in vitro research use only