

## LEPR Antibody

Catalog No: #36949

Orders: [order@signalwayantibody.com](mailto:order@signalwayantibody.com)Support: [tech@signalwayantibody.com](mailto:tech@signalwayantibody.com)

## Description

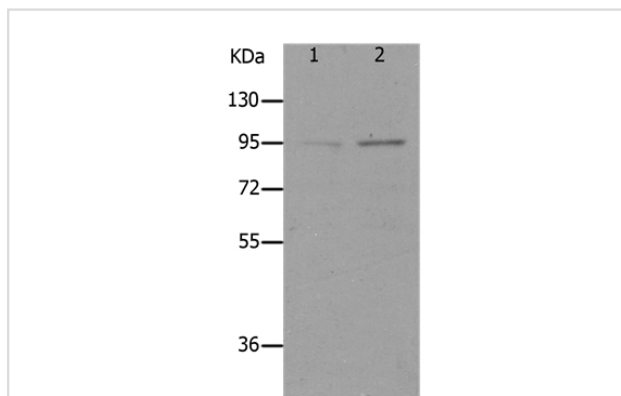
Product Name	LEPR Antibody
Host Species	Rabbit
Clonality	Polyclonal
Purification	Antigen affinity purification.
Applications	WB IHC
Species Reactivity	Hu
Specificity	The antibody detects endogenous levels of total LEPR protein.
Immunogen Type	Peptide
Immunogen Description	Synthetic peptide corresponding to a region derived from internal residues of human leptin receptor
Target Name	LEPR
Other Names	OBR; OB-R; CD295; LEP-R
Accession No.	Swiss-Prot#: P48357NCBI Gene ID: 3953Gene Accssion: NP_002294
Uniprot	P48357
GeneID	3953;
SDS-PAGE MW	96kd
Concentration	0.8mg/ml
Formulation	Rabbit IgG in pH7.4 PBS, 0.05% NaN <sub>3</sub> , 40% Glycerol.
Storage	Store at -20°C

## Application Details

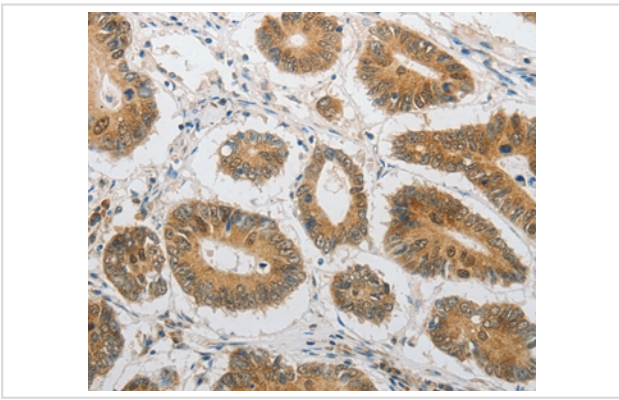
Western blotting: 1:200-1:1000

Immunohistochemistry: 1:25-1:100

## Images



Gel: 10%SDS-PAGE  
Lysates (from left to right): HT-29 and K562 cell  
Amount of lysate: 40ug per lane  
Primary antibody: 1/400 dilution  
Secondary antibody dilution: 1/8000  
Exposure time: 1 minute



Immunohistochemical analysis of paraffin-embedded Human colon cancer tissue using #36949 at dilution 1/20.

## Background

The protein encoded by this gene belongs to the gp130 family of cytokine receptors that are known to stimulate gene transcription via activation of cytosolic STAT proteins. This protein is a receptor for leptin (an adipocyte-specific hormone that regulates body weight), and is involved in the regulation of fat metabolism, as well as in a novel hematopoietic pathway that is required for normal lymphopoiesis. Mutations in this gene have been associated with obesity and pituitary dysfunction. Alternatively spliced transcript variants encoding different isoforms have been described for this gene. It is noteworthy that this gene and LEPROT gene (GeneID:54741) share the same promoter and the first 2 exons, however, encode distinct proteins (PMID:9207021).

Note: This product is for in vitro research use only