

PAFAH1B1 Antibody

Catalog No: #36952

Orders: order@signalwayantibody.comSupport: tech@signalwayantibody.com

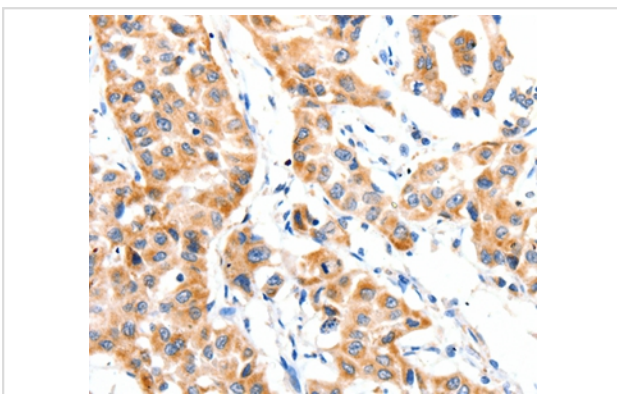
Description

Product Name	PAFAH1B1 Antibody
Host Species	Rabbit
Clonality	Polyclonal
Purification	Antigen affinity purification.
Applications	IHC
Species Reactivity	Hu Ms Rt
Specificity	The antibody detects endogenous levels of total PAFAH1B1 protein.
Immunogen Type	Peptide
Immunogen Description	Synthetic peptide corresponding to a region derived from internal residues of human platelet-activating factor acetylhydrolase 1b, regulatory subunit 1 (45kDa)
Target Name	PAFAH1B1
Other Names	MDS; LIS1; LIS2; MDCR; PAFAH
Accession No.	Swiss-Prot#: P43034NCBI Gene ID: 5048Gene Accssion: NP_000421
Uniprot	P43034
GeneID	5048;
Concentration	0.9mg/ml
Formulation	Rabbit IgG in pH7.4 PBS, 0.05% NaN ₃ , 40% Glycerol.
Storage	Store at -20°C

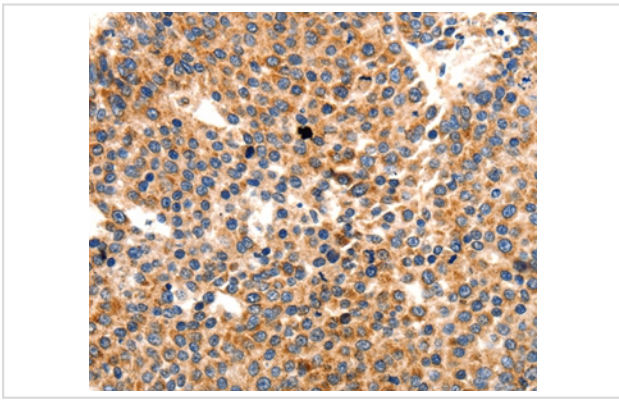
Application Details

Immunohistochemistry: 1:25-1:100

Images



Immunohistochemical analysis of paraffin-embedded Human lung cancer tissue using #36952 at dilution 1/25.



Immunohistochemical analysis of paraffin-embedded Human liver cancer tissue using #36952 at dilution 1/25.

Background

This locus was identified as encoding a gene that when mutated or lost caused the lissencephaly associated with Miller-Dieker lissencephaly syndrome. This gene encodes the non-catalytic alpha subunit of the intracellular Ib isoform of platelet-activating factor acetylhydrolase, a heterotrimeric enzyme that specifically catalyzes the removal of the acetyl group at the SN-2 position of platelet-activating factor (identified as 1-O-alkyl-2-acetyl-sn-glycerol-3-phosphorylcholine). Two other isoforms of intracellular platelet-activating factor acetylhydrolase exist: one composed of multiple subunits, the other, a single subunit. In addition, a single-subunit isoform of this enzyme is found in serum.

Note: This product is for in vitro research use only