

## Description

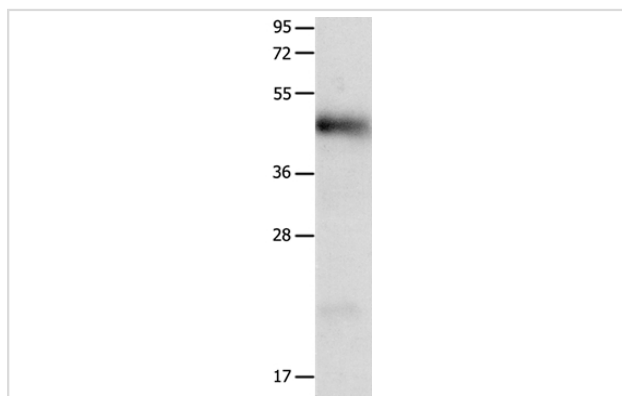
Product Name	LRP1 Antibody
Host Species	Rabbit
Clonality	Polyclonal
Purification	Antigen affinity purification.
Applications	WB IHC
Species Reactivity	Hu
Specificity	The antibody detects endogenous levels of total LRP1 protein.
Immunogen Type	Peptide
Immunogen Description	Synthetic peptide corresponding to residues near the C terminal of human low density lipoprotein receptor-related protein 1
Target Name	LRP1
Other Names	APR; LRP; A2MR; CD91; APOER; TGFBR5; IGFBP3R
Accession No.	Swiss-Prot#: Q07954NCBI Gene ID: 4035Gene Accssion: AAH21204.1
Uniprot	Q07954
GeneID	4035;
SDS-PAGE MW	48kd
Concentration	2.5mg/ml
Formulation	Rabbit IgG in pH7.4 PBS, 0.05% NaN <sub>3</sub> , 40% Glycerol.
Storage	Store at -20°C

## Application Details

Western blotting: 1:500-1:2000

Immunohistochemistry: 1:100-1:300

## Images



Gel: 12%SDS-PAGE

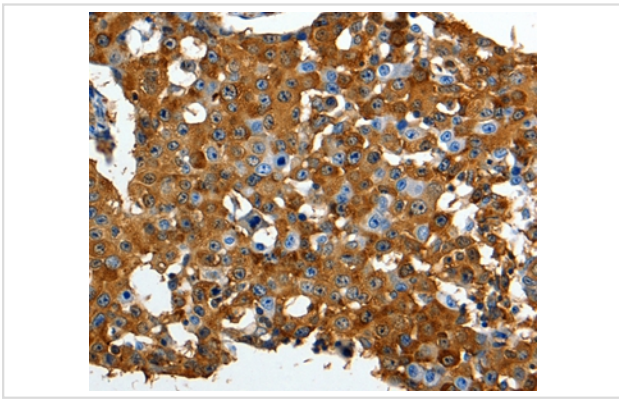
Lysates (from left to right): Human liver cancer tissue

Amount of lysate: 40ug per lane

Primary antibody: 1/1250 dilution

Secondary antibody dilution: 1/8000

Exposure time: 40 seconds



Immunohistochemical analysis of paraffin-embedded Human breast cancer tissue using #36956 at dilution 1/90.

## Background

The protein encoded by this gene is an endocytic receptor involved in several cellular processes, including intracellular signaling, lipid homeostasis, and clearance of apoptotic cells. In addition, the encoded protein is necessary for the A2M-mediated clearance of secreted amyloid precursor protein and beta-amyloid, the main component of amyloid plaques found in Alzheimer patients. Expression of this gene decreases with age and has been found to be lower than controls in brain tissue from Alzheimer patients.

Note: This product is for in vitro research use only