

LRP5 Antibody

Catalog No: #36957

Orders: order@signalwayantibody.comSupport: tech@signalwayantibody.com

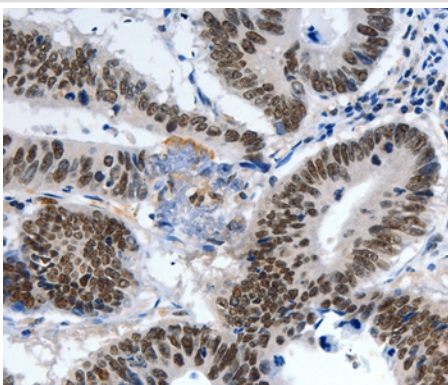
Description

Product Name	LRP5 Antibody
Host Species	Rabbit
Clonality	Polyclonal
Purification	Antigen affinity purification.
Applications	IHC
Species Reactivity	Hu Ms
Specificity	The antibody detects endogenous levels of total LRP5 protein.
Immunogen Type	Peptide
Immunogen Description	Synthetic peptide corresponding to a region derived from internal residues of human low density lipoprotein receptor-related protein 5
Target Name	LRP5
Other Names	HBM; LR3; OPS; EVR1; EVR4; LRP7; OPPG; BMND1; OPTA1; VBCH2
Accession No.	Swiss-Prot#: O75197NCBI Gene ID: 4041Gene Accssion: NP_002326
Uniprot	O75197
GeneID	4041;
Concentration	2.2mg/ml
Formulation	Rabbit IgG in pH7.4 PBS, 0.05% NaN ₃ , 40% Glycerol.
Storage	Store at -20°C

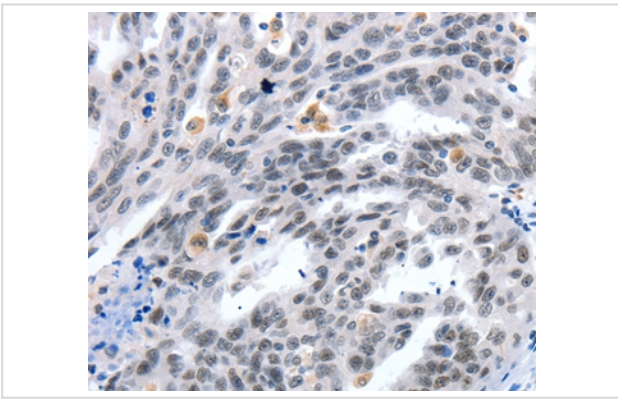
Application Details

Immunohistochemistry: 1:50-1:200

Images



Immunohistochemical analysis of paraffin-embedded Human colon cancer tissue using #36957 at dilution 1/55.



Immunohistochemical analysis of paraffin-embedded Human ovarian cancer tissue using #36957 at dilution 1/55.

Background

This gene encodes a transmembrane low-density lipoprotein receptor that binds and internalizes ligands in the process of receptor-mediated endocytosis. This protein also acts as a co-receptor with Frizzled protein family members for transducing signals by Wnt proteins and was originally cloned on the basis of its association with type 1 diabetes mellitus in humans. This protein plays a key role in skeletal homeostasis and many bone density related diseases are caused by mutations in this gene. Mutations in this gene also cause familial exudative vitreoretinopathy.

Note: This product is for in vitro research use only