

LRPPRC Antibody

Catalog No: #36960

Orders: order@signalwayantibody.comSupport: tech@signalwayantibody.com

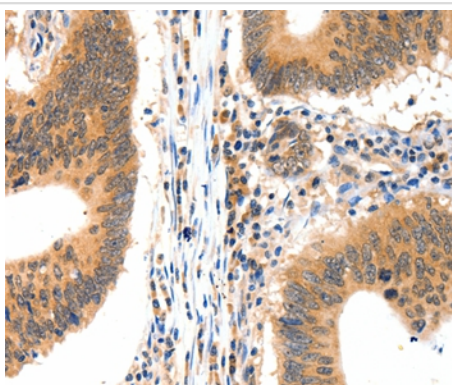
Description

Product Name	LRPPRC Antibody
Host Species	Rabbit
Clonality	Polyclonal
Purification	Antigen affinity purification.
Applications	IHC
Species Reactivity	Hu Ms
Specificity	The antibody detects endogenous levels of total LRPPRC protein.
Immunogen Type	Peptide
Immunogen Description	Synthetic peptide corresponding to a region derived from internal residues of human leucine-rich pentatricopeptide repeat containing
Target Name	LRPPRC
Other Names	LSFC; GP130; LRP130; CLONE-23970
Accession No.	Swiss-Prot#: P42704NCBI Gene ID: 10128Gene Accssion: NP_573566
Uniprot	P42704
GeneID	10128;
Concentration	2.2mg/ml
Formulation	Rabbit IgG in pH7.4 PBS, 0.05% NaN ₃ , 40% Glycerol.
Storage	Store at -20°C

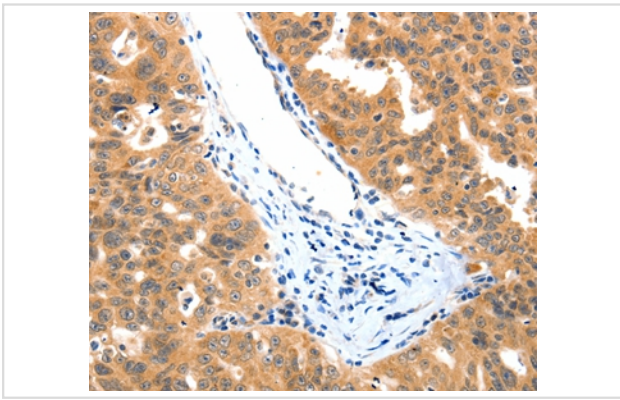
Application Details

Immunohistochemistry: 1:15-1:50

Images



Immunohistochemical analysis of paraffin-embedded Human colon cancer tissue using #36960 at dilution 1/15.



Immunohistochemical analysis of paraffin-embedded Human ovarian cancer tissue using #36960 at dilution 1/15.

Background

This gene encodes a leucine-rich protein that has multiple pentatricopeptide repeats (PPR). The precise role of this protein is unknown but studies suggest it may play a role in cytoskeletal organization, vesicular transport, or in transcriptional regulation of both nuclear and mitochondrial genes. The protein localizes primarily to mitochondria and is predicted to have an N-terminal mitochondrial targeting sequence. Mutations in this gene are associated with the French-Canadian type of Leigh syndrome.

Note: This product is for in vitro research use only