

ITGAX Antibody

Catalog No: #36961

Orders: order@signalwayantibody.comSupport: tech@signalwayantibody.com

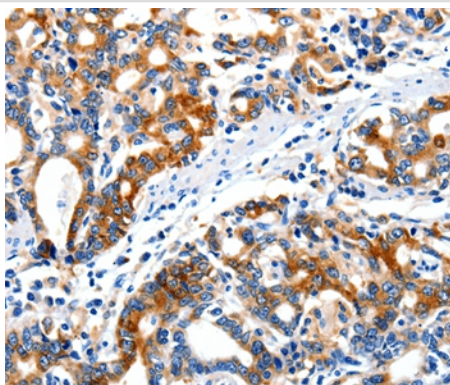
Description

Product Name	ITGAX Antibody
Host Species	Rabbit
Clonality	Polyclonal
Purification	Antigen affinity purification.
Applications	IHC
Species Reactivity	Hu
Specificity	The antibody detects endogenous levels of total ITGAX protein.
Immunogen Type	Peptide
Immunogen Description	Synthetic peptide corresponding to residues near the C terminal of human integrin, alpha X (complement component 3 receptor 4 subunit)
Target Name	ITGAX
Other Names	CD11C; SLEB6
Accession No.	Swiss-Prot#: P20702NCBI Gene ID: 3687Gene Accssion: NP_000878
Uniprot	P20702
GeneID	3687;
Concentration	0.7mg/ml
Formulation	Rabbit IgG in pH7.4 PBS, 0.05% NaN ₃ , 40% Glycerol.
Storage	Store at -20°C

Application Details

Immunohistochemistry: 1:15-1:50

Images



Immunohistochemical analysis of paraffin-embedded Human gastric cancer tissue using #36961 at dilution 1/20.

Background

This gene encodes the integrin alpha X chain protein. Integrins are heterodimeric integral membrane proteins composed of an alpha chain and a beta chain. This protein combines with the beta 2 chain (ITGB2) to form a leukocyte-specific integrin referred to as inactivated-C3b (iC3b) receptor 4 (CR4).

The alpha X beta 2 complex seems to overlap the properties of the alpha M beta 2 integrin in the adherence of neutrophils and monocytes to stimulated endothelium cells, and in the phagocytosis of complement coated particles.

Note: This product is for in vitro research use only