

## ITGAM Antibody

Catalog No: #36962

Orders: [order@signalwayantibody.com](mailto:order@signalwayantibody.com)Support: [tech@signalwayantibody.com](mailto:tech@signalwayantibody.com)

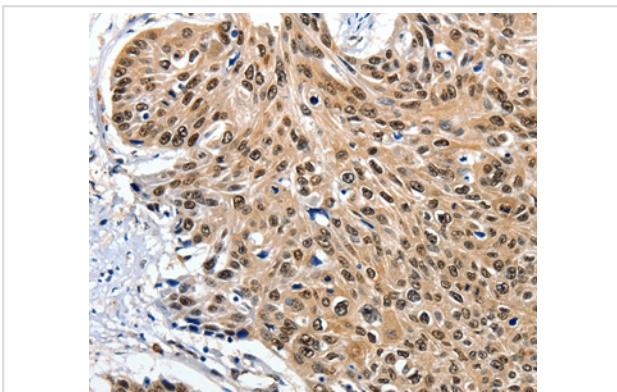
## Description

Product Name	ITGAM Antibody
Host Species	Rabbit
Clonality	Polyclonal
Purification	Antigen affinity purification.
Applications	IHC
Species Reactivity	Hu
Specificity	The antibody detects endogenous levels of total ITGAM protein.
Immunogen Type	Peptide
Immunogen Description	Synthetic peptide corresponding to residues near the C terminal of human integrin, alpha M (complement component 3 receptor 3 subunit)
Target Name	ITGAM
Other Names	CR3A; MO1A; CD11B; MAC-1; MAC1A; SLEB6
Accession No.	Swiss-Prot#: P11215NCBI Gene ID: 3684Gene Accssion: NP_001139280
Uniprot	P11215
GeneID	3684;
Concentration	0.8mg/ml
Formulation	Rabbit IgG in pH7.4 PBS, 0.05% NaN <sub>3</sub> , 40% Glycerol.
Storage	Store at -20°C

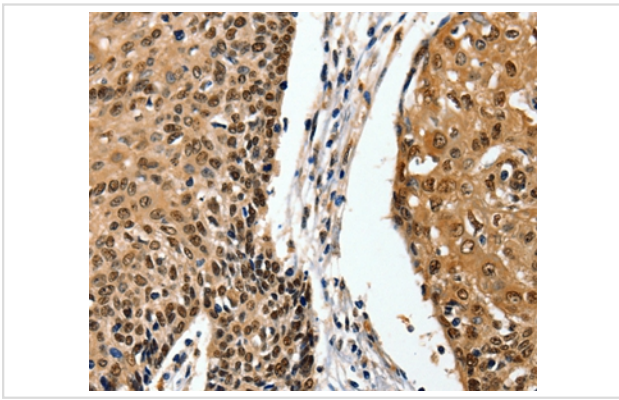
## Application Details

Immunohistochemistry: 1:25-1:100

## Images



Immunohistochemical analysis of paraffin-embedded Human esophagus cancer tissue using #36962 at dilution 1/20.



Immunohistochemical analysis of paraffin-embedded Human cervix cancer tissue using #36962 at dilution 1/20.

## Background

This gene encodes the integrin alpha M chain. Integrins are heterodimeric integral membrane proteins composed of an alpha chain and a beta chain. This I-domain containing alpha integrin combines with the beta 2 chain (ITGB2) to form a leukocyte-specific integrin referred to as macrophage receptor 1 ('Mac-1'), or inactivated-C3b (iC3b) receptor 3 ('CR3'). The alpha M beta 2 integrin is important in the adherence of neutrophils and monocytes to stimulated endothelium, and also in the phagocytosis of complement coated particles. Multiple transcript variants encoding different isoforms have been found for this gene.

Note: This product is for in vitro research use only