

MADCAM1 Antibody

Catalog No: #36963

Orders: order@signalwayantibody.com

Support: tech@signalwayantibody.com

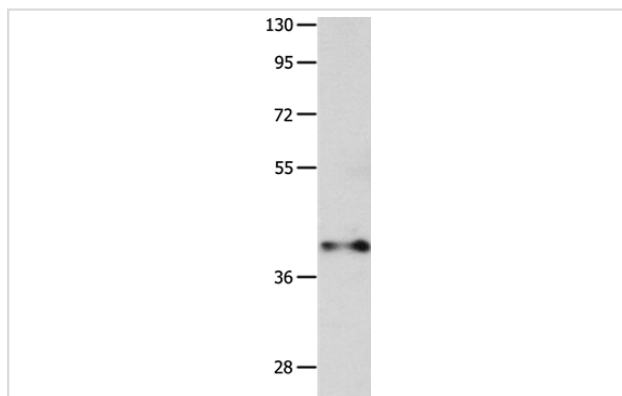
Description

Product Name	MADCAM1 Antibody
Host Species	Rabbit
Clonality	Polyclonal
Purification	Antigen affinity purification.
Applications	WB
Species Reactivity	Hu Ms
Specificity	The antibody detects endogenous levels of total MADCAM1 protein.
Immunogen Type	Peptide
Immunogen Description	Synthetic peptide corresponding to a region derived from internal residues of human mucosal vascular addressin cell adhesion molecule 1
Target Name	MADCAM1
Other Names	MACAM1
Accession No.	Swiss-Prot#: Q13477 NCBI Gene ID: 8174Gene Accssion: NP_570116
Uniprot	Q13477
GeneID	8174;
SDS-PAGE MW	40kd
Concentration	0.6mg/ml
Formulation	Rabbit IgG in pH7.4 PBS, 0.05% NaN ₃ , 40% Glycerol.
Storage	Store at -20°C

Application Details

Western blotting: 1:200-1:1000

Images



Gel: 10%SDS-PAGE
 Lysates (from left to right): Mouse muscle tissue
 Amount of lysate: 40ug per lane
 Primary antibody: 1/300 dilution
 Secondary antibody dilution: 1/8000
 Exposure time: 1 minute

Background

The protein encoded by this gene is an endothelial cell adhesion molecule that interacts preferentially with the leukocyte beta7 integrin LPAM-1

(alpha4beta7), L-selectin, and VLA-4 (alpha4beta1) on myeloid cells to direct leukocytes into mucosal and inflamed tissues. It is a member of the immunoglobulin family and is similar to ICAM1 and VCAM1. At least seven alternatively spliced transcripts encoding different protein isoforms have been found for this gene, but the full-length nature of some variants has not been determined.

Note: This product is for in vitro research use only