

MAGEA2 Antibody

Catalog No: #36965

Orders: order@signalwayantibody.comSupport: tech@signalwayantibody.com

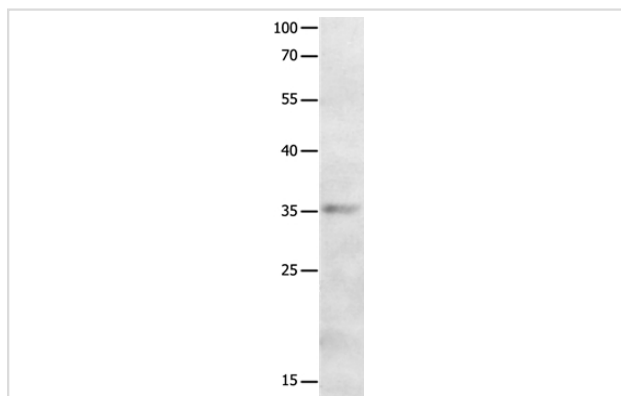
Description

Product Name	MAGEA2 Antibody
Host Species	Rabbit
Clonality	Polyclonal
Purification	Antigen affinity purification.
Applications	WB
Species Reactivity	Hu
Specificity	The antibody detects endogenous levels of total MAGEA2 protein.
Immunogen Type	Peptide
Immunogen Description	Synthetic peptide corresponding to a region derived from internal residues of human melanoma antigen family A, 2
Target Name	MAGEA2
Other Names	CT1.2; MAGE2; MAGEA2A
Accession No.	Swiss-Prot#: P43356NCBI Gene ID: 4101Gene Accssion: NP_005352
Uniprot	P43356
GeneID	266740;4101;
SDS-PAGE MW	35kd
Concentration	1.4mg/ml
Formulation	Rabbit IgG in pH7.4 PBS, 0.05% NaN ₃ , 40% Glycerol.
Storage	Store at -20°C

Application Details

Western blotting: 1:200-1:1000

Images



Gel: 10%SDS-PAGE

Lysates (from left to right): Human leiomyosarcoma tissue

Amount of lysate: 40ug per lane

Primary antibody: 1/700 dilution

Secondary antibody dilution: 1/8000

Exposure time: 30 seconds

Background

This gene is a member of the MAGEA gene family. The members of this family encode proteins with 50 to 80% sequence identity to each other. The

promoters and first exons of the MAGEA genes show considerable variability, suggesting that the existence of this gene family enables the same function to be expressed under different transcriptional controls. The MAGEA genes are clustered at chromosomal location Xq28. They have been implicated in some hereditary disorders, such as dyskeratosis congenita. This gene has two identical copies at different loci. Alternatively spliced transcript variants encoding the same protein have been identified for this gene.

Note: This product is for in vitro research use only