

## MATN1 Antibody

Catalog No: #36966

Orders: [order@signalwayantibody.com](mailto:order@signalwayantibody.com)Support: [tech@signalwayantibody.com](mailto:tech@signalwayantibody.com)

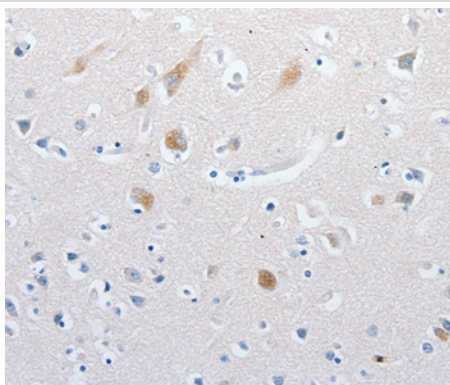
## Description

Product Name	MATN1 Antibody
Host Species	Rabbit
Clonality	Polyclonal
Purification	Antigen affinity purification.
Applications	IHC
Species Reactivity	Hu
Specificity	The antibody detects endogenous levels of total MATN1 protein.
Immunogen Type	Peptide
Immunogen Description	Synthetic peptide corresponding to residues near the C terminal of human matrilin 1, cartilage matrix protein
Target Name	MATN1
Other Names	CMP; CRTM
Accession No.	Swiss-Prot#: P21941NCBI Gene ID: 4146Gene Accssion: NP_002370
Uniprot	P21941
GeneID	4146;
Concentration	1.7mg/ml
Formulation	Rabbit IgG in pH7.4 PBS, 0.05% NaN <sub>3</sub> , 40% Glycerol.
Storage	Store at -20°C

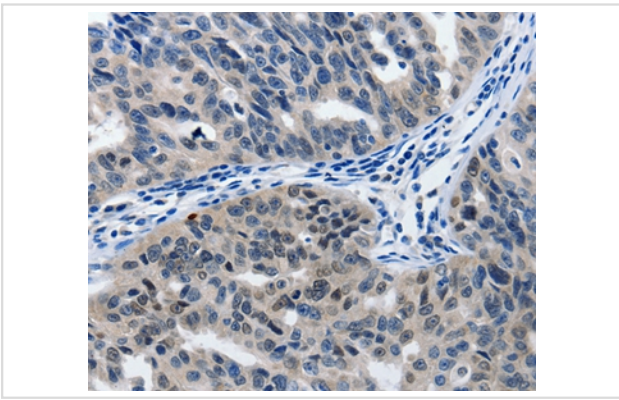
## Application Details

Immunohistochemistry: 1:25-1:100

## Images



Immunohistochemical analysis of paraffin-embedded Human brain using #36966 at dilution 1/60.



Immunohistochemical analysis of paraffin-embedded Human ovarian cancer tissue using #36966 at dilution 1/60.

## Background

This gene encodes a member of von Willebrand factor A domain containing protein family. This family of proteins are thought to be involved in the formation of filamentous networks in the extracellular matrices of various tissues. Mutations of this gene have been associated with variety of inherited chondrodysplasias.

Note: This product is for in vitro research use only