

CCL8 Antibody

Catalog No: #36968

Orders: order@signalwayantibody.com

Support: tech@signalwayantibody.com

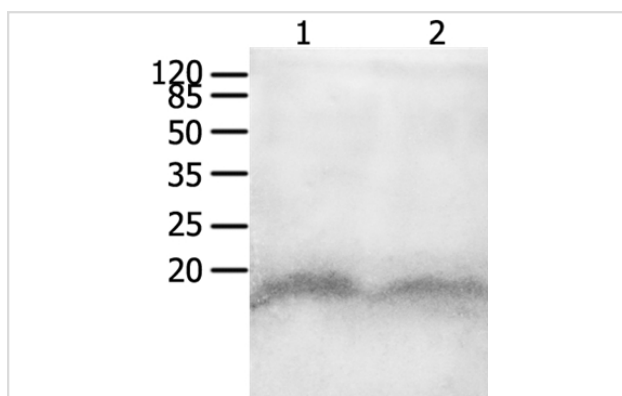
Description

Product Name	CCL8 Antibody
Host Species	Rabbit
Clonality	Polyclonal
Purification	Antigen affinity purification.
Applications	WB
Species Reactivity	Hu
Specificity	The antibody detects endogenous levels of total CCL8 protein.
Immunogen Type	Peptide
Immunogen Description	Synthetic peptide corresponding to residues near the C terminal of human chemokine (C-C motif) ligand 8
Target Name	CCL8
Other Names	HC14; MCP2; MCP-2; SCYA8; SCYA10
Accession No.	Swiss-Prot#: P80075NCBI Gene ID: 6355Gene Accssion: NP_005614
Uniprot	P80075
GeneID	6355;
SDS-PAGE MW	11kd
Concentration	2.6mg/ml
Formulation	Rabbit IgG in pH7.4 PBS, 0.05% NaN ₃ , 40% Glycerol.
Storage	Store at -20°C

Application Details

Western blotting: 1:200-1:1000

Images



Gel: 12%SDS-PAGE
 Lysates (from left to right): 293T and Jurkat cell
 Amount of lysate: 40ug per lane
 Primary antibody: 1/950 dilution
 Secondary antibody dilution: 1/8000
 Exposure time: 2 minutes

Background

This gene is one of several cytokine genes clustered on the q-arm of chromosome 17. Cytokines are a family of secreted proteins involved in immunoregulatory and inflammatory processes. The protein encoded by this gene is structurally related to the CXC subfamily of cytokines. Members

of this subfamily are characterized by two cysteines separated by a single amino acid. This cytokine displays chemotactic activity for monocytes, lymphocytes, basophils and eosinophils. By recruiting leukocytes to sites of inflammation this cytokine may contribute to tumor-associated leukocyte infiltration and to the antiviral state against HIV infection. [

Note: This product is for in vitro research use only