

## SLC16A7 Antibody

Catalog No: #36975

Orders: order@signalwayantibody.com

Support: tech@signalwayantibody.com

## Description

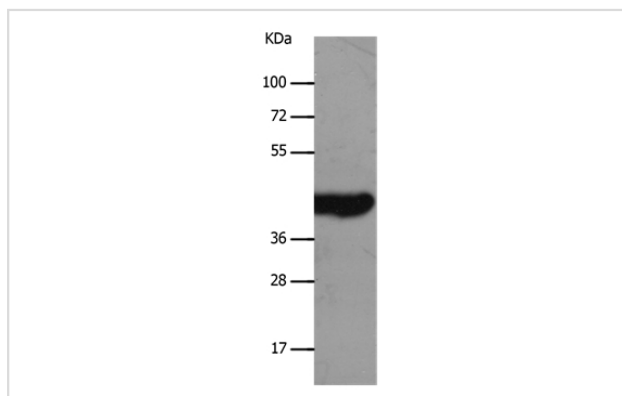
Product Name	SLC16A7 Antibody
Host Species	Rabbit
Clonality	Polyclonal
Purification	Antigen affinity purification.
Applications	WB IHC
Species Reactivity	Hu
Specificity	The antibody detects endogenous levels of total SLC16A7 protein.
Immunogen Type	Peptide
Immunogen Description	Synthetic peptide corresponding to residues near the C terminal of human solute carrier family 16, member 7 (monocarboxylic acid transporter 2)
Target Name	SLC16A7
Other Names	MCT2
Accession No.	Swiss-Prot#: O60669NCBI Gene ID: 9194Gene Accssion: NP_004722
Uniprot	O60669
GeneID	9194;
SDS-PAGE MW	52kd
Concentration	2.4mg/ml
Formulation	Rabbit IgG in pH7.4 PBS, 0.05% NaN <sub>3</sub> , 40% Glycerol.
Storage	Store at -20°C

## Application Details

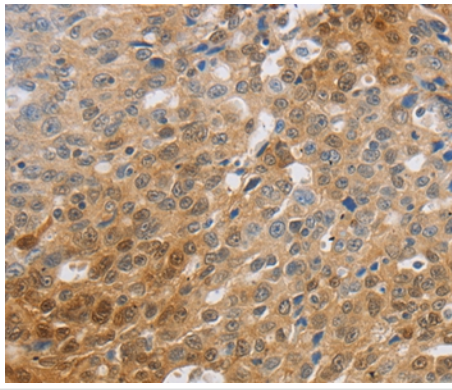
Western blotting: 1:1000-1:5000

Immunohistochemistry: 1:50-1:200

## Images



Gel: 10+12%SDS-PAGE  
Lysate: 30ug A549 cell  
Primary antibody: 1/1200 dilution  
Secondary antibody dilution: 1/8000  
Exposure time: 40 seconds



Immunohistochemical analysis of paraffin-embedded Human ovarian cancer tissue using #36975 at dilution 1/70.

## Background

This gene is a member of the monocarboxylate transporter family. Members in this family transport metabolites, such as lactate, pyruvate, and ketone bodies. The protein encoded by this gene catalyzes the proton-linked transport of monocarboxylates and has the highest affinity for pyruvate. This protein has been reported to be more highly expressed in prostate and colorectal cancer specimens when compared to control specimens. Alternative splicing results in multiple transcript variants.

Note: This product is for in vitro research use only