

ABCB1 Antibody

Catalog No: #36980

Orders: order@signalwayantibody.comSupport: tech@signalwayantibody.com

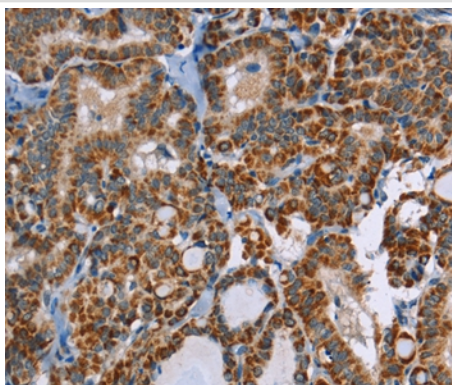
Description

Product Name	ABCB1 Antibody
Host Species	Rabbit
Clonality	Polyclonal
Purification	Antigen affinity purification.
Applications	IHC
Species Reactivity	Hu
Specificity	The antibody detects endogenous levels of total ABCB1 protein.
Immunogen Type	Peptide
Immunogen Description	Synthetic peptide corresponding to residues near the N terminal of human ATP-binding cassette, sub-family B (MDR/TAP), member 1
Target Name	ABCB1
Other Names	CLCS; MDR1; P-GP; PGY1; ABC20; CD243; GP170
Accession No.	Swiss-Prot#: P08183NCBI Gene ID: 5243Gene Accssion: NP_000918/P08183
Uniprot	P08183
GeneID	5243;
Concentration	2mg/ml
Formulation	Rabbit IgG in pH7.4 PBS, 0.05% NaN ₃ , 40% Glycerol.
Storage	Store at -20°C

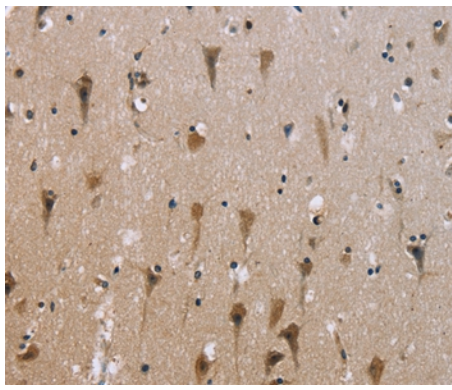
Application Details

Immunohistochemistry: 1:50-1:200

Images



Immunohistochemical analysis of paraffin-embedded Human thyroid cancer tissue using #36980 at dilution 1/30.



Immunohistochemical analysis of paraffin-embedded Human brain tissue using #36980 at dilution 1/30.

Background

The membrane-associated protein encoded by this gene is a member of the superfamily of ATP-binding cassette (ABC) transporters. ABC proteins transport various molecules across extra- and intra-cellular membranes. ABC genes are divided into seven distinct subfamilies (ABC1, MDR/TAP, MRP, ALD, OABP, GCN20, White). This protein is a member of the MDR/TAP subfamily. Members of the MDR/TAP subfamily are involved in multidrug resistance.?

Note: This product is for in vitro research use only