

## ABCC1 Antibody

Catalog No: #36981

Orders: order@signalwayantibody.com

Support: tech@signalwayantibody.com

## Description

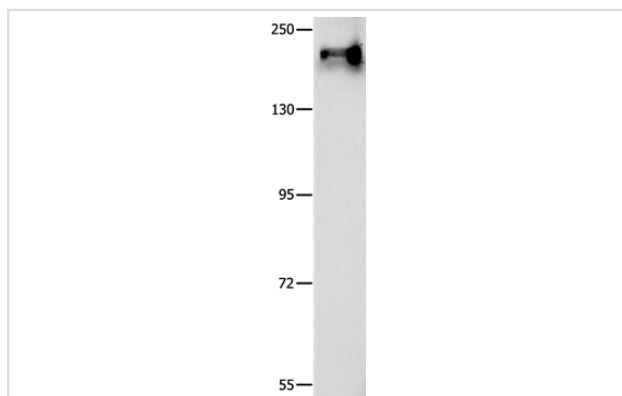
Product Name	ABCC1 Antibody
Host Species	Rabbit
Clonality	Polyclonal
Purification	Antigen affinity purification.
Applications	WB IHC
Species Reactivity	Hu
Specificity	The antibody detects endogenous levels of total ABCC1 protein.
Immunogen Type	Peptide
Immunogen Description	Synthetic peptide corresponding to a region derived from internal residues of human ATP-binding cassette, sub-family C (CFTR/MRP), member 1
Target Name	ABCC1
Other Names	MRP; ABCC; GS-X; MRP1; ABC29
Accession No.	Swiss-Prot#: P33527NCBI Gene ID: 4363Gene Accssion: NP_004987
Uniprot	P33527
GeneID	4363;
SDS-PAGE MW	173kd
Concentration	0.5mg/ml
Formulation	Rabbit IgG in pH7.4 PBS, 0.05% NaN <sub>3</sub> , 40% Glycerol.
Storage	Store at -20°C

## Application Details

Western blotting: 1:200-1:1000

Immunohistochemistry: 1:15-1:50

## Images



Gel: 8%SDS-PAGE

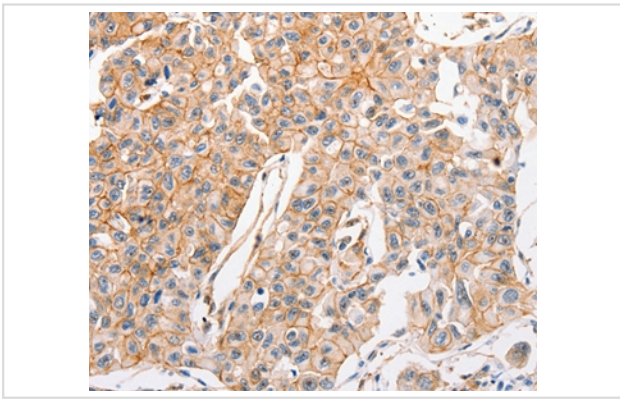
Lysates (from left to right): Human fetal lung tissue

Amount of lysate: 40ug per lane

Primary antibody: 1/250 dilution

Secondary antibody dilution: 1/8000

Exposure time: 1 minute



Immunohistochemical analysis of paraffin-embedded Human lung cancer tissue using #36981 at dilution 1/15.

## Background

The protein encoded by this gene is a member of the superfamily of ATP-binding cassette (ABC) transporters. ABC proteins transport various molecules across extra-and intra-cellular membranes. ABC genes are divided into seven distinct subfamilies (ABC1, MDR/TAP, MRP, ALD, OABP, GCN20, White). This full transporter is a member of the MRP subfamily which is involved in multi-drug resistance. This protein functions as a multispecific organic anion transporter, with oxidized glutathione, cysteinyl leukotrienes, and activated aflatoxin B1 as substrates. This protein also transports glucuronides and sulfate conjugates of steroid hormones and bile salts. Alternatively spliced variants of this gene have been described but their full-length nature is unknown.

Note: This product is for in vitro research use only