

MMP25 Antibody

Catalog No: #36986

Orders: order@signalwayantibody.com

Support: tech@signalwayantibody.com

Description

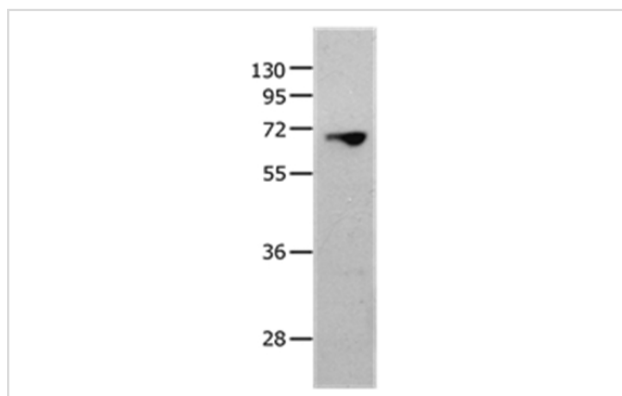
Product Name	MMP25 Antibody
Host Species	Rabbit
Clonality	Polyclonal
Purification	Antigen affinity purification.
Applications	WB IHC
Species Reactivity	Hu
Specificity	The antibody detects endogenous levels of total MMP25 protein.
Immunogen Type	Peptide
Immunogen Description	Synthetic peptide corresponding to a region derived from internal residues of human matrix metalloproteinase 25
Target Name	MMP25
Other Names	MMP20; MMPL1; MMP-25; MMP20A; MT6MMP; MTMMP6; MT-MMP6; MT6-MMP; MT-MMP 6
Accession No.	Swiss-Prot#: Q9NPA2NCBI Gene ID: 64386Gene Accssion: NP_071913
Uniprot	Q9NPA2
GeneID	64386;
SDS-PAGE MW	63kd
Concentration	2.6mg/ml
Formulation	Rabbit IgG in pH7.4 PBS, 0.05% NaN ₃ , 40% Glycerol.
Storage	Store at -20°C

Application Details

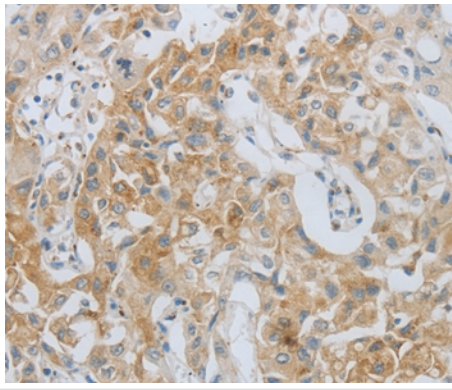
Western blotting: 1:500-1:2000

Immunohistochemistry: 1:50-1:200

Images



Gel: 10+12%SDS-PAGE
 Lysate: 40ug 823 cell
 Primary antibody: 1/1300 dilution
 Secondary antibody dilution: 1/8000
 Exposure time: 2 minutes



Immunohistochemical analysis of paraffin-embedded Human lung cancer tissue using #36986 at dilution 1/80.

Background

Proteins of the matrix metalloproteinase (MMP) family are involved in the breakdown of extracellular matrix in normal physiological processes, such as embryonic development, reproduction, and tissue remodeling, as well as in disease processes, such as arthritis and metastasis. Most MMPs are secreted as inactive proproteins which are activated when cleaved by extracellular proteinases. However, the protein encoded by this gene is a member of the membrane-type MMP (MT-MMP) subfamily, attached to the plasma membrane via a glycosylphosphatidyl inositol anchor. In response to bacterial infection or inflammation, the encoded protein is thought to inactivate alpha-1 proteinase inhibitor, a major tissue protectant against proteolytic enzymes released by activated neutrophils, facilitating the transendothelial migration of neutrophils to inflammatory sites. The encoded protein may also play a role in tumor invasion and metastasis through activation of MMP2. The gene has previously been referred to as MMP20 but has been renamed MMP25.

Note: This product is for in vitro research use only