

## MTNR1A Antibody

Catalog No: #36989

Orders: [order@signalwayantibody.com](mailto:order@signalwayantibody.com)Support: [tech@signalwayantibody.com](mailto:tech@signalwayantibody.com)

## Description

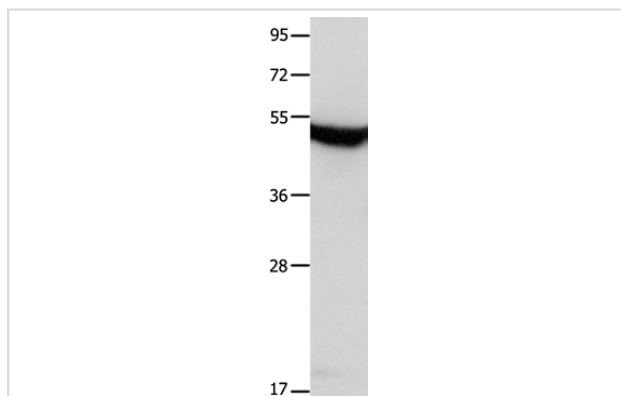
Product Name	MTNR1A Antibody
Host Species	Rabbit
Clonality	Polyclonal
Purification	Antigen affinity purification.
Applications	WB IHC
Species Reactivity	Hu Ms
Specificity	The antibody detects endogenous levels of total MTNR1A protein.
Immunogen Type	Peptide
Immunogen Description	Synthetic peptide corresponding to a region derived from internal residues of human melatonin receptor 1A
Target Name	MTNR1A
Other Names	MT1; MEL-1A-R
Accession No.	Swiss-Prot#: P48039NCBI Gene ID: 4543Gene Accssion: NP_005949
Uniprot	P48039
GeneID	4543;
SDS-PAGE MW	39kd
Concentration	1.3mg/ml
Formulation	Rabbit IgG in pH7.4 PBS, 0.05% NaN <sub>3</sub> , 40% Glycerol.
Storage	Store at -20°C

## Application Details

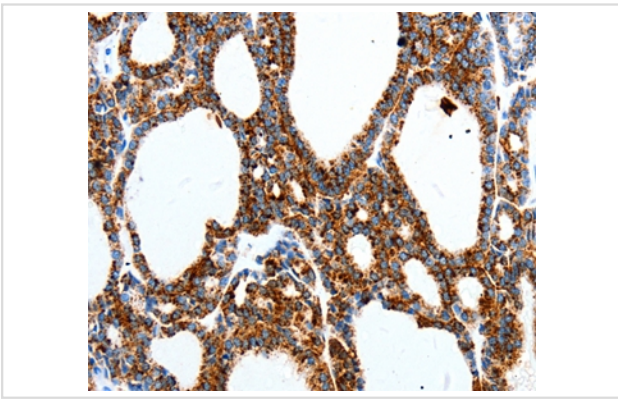
Western blotting: 1:1000-1:5000

Immunohistochemistry: 1:25-1:100

## Images



Gel: 10%SDS-PAGE  
Lysates (from left to right): Mouse brain tissue  
Amount of lysate: 30ug per lane  
Primary antibody: 1/650 dilution  
Secondary antibody dilution: 1/8000  
Exposure time: 1 minute



Immunohistochemical analysis of paraffin-embedded Human thyroid cancer tissue using #36989 at dilution 1/40.

## Background

This gene encodes one of two high affinity forms of a receptor for melatonin, the primary hormone secreted by the pineal gland. This receptor is a G-protein coupled, 7-transmembrane receptor that is responsible for melatonin effects on mammalian circadian rhythm and reproductive alterations affected by day length. The receptor is an integral membrane protein that is readily detectable and localized to two specific regions of the brain. The hypothalamic suprachiasmatic nucleus appears to be involved in circadian rhythm while the hypophysial pars tuberalis may be responsible for the reproductive effects of melatonin.

Note: This product is for in vitro research use only