

## MLNR Antibody

Catalog No: #36990

Orders: [order@signalwayantibody.com](mailto:order@signalwayantibody.com)Support: [tech@signalwayantibody.com](mailto:tech@signalwayantibody.com)

## Description

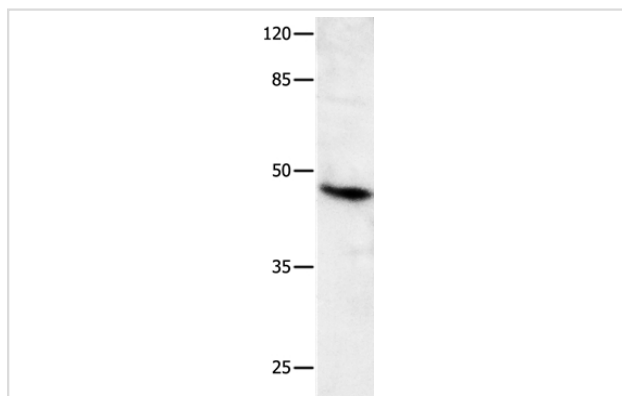
Product Name	MLNR Antibody
Host Species	Rabbit
Clonality	Polyclonal
Purification	Antigen affinity purification.
Applications	WB IHC
Species Reactivity	Hu
Specificity	The antibody detects endogenous levels of total MLNR protein.
Immunogen Type	Peptide
Immunogen Description	Synthetic peptide corresponding to residues near the C terminal of human motilin receptor
Target Name	MLNR
Other Names	GPR38; MTLR1
Accession No.	Swiss-Prot#: O43193NCBI Gene ID: 2862Gene Accssion: NP_001498
Uniprot	O43193
GeneID	2862;
SDS-PAGE MW	45kd
Concentration	1.8mg/ml
Formulation	Rabbit IgG in pH7.4 PBS, 0.05% NaN <sub>3</sub> , 40% Glycerol.
Storage	Store at -20°C

## Application Details

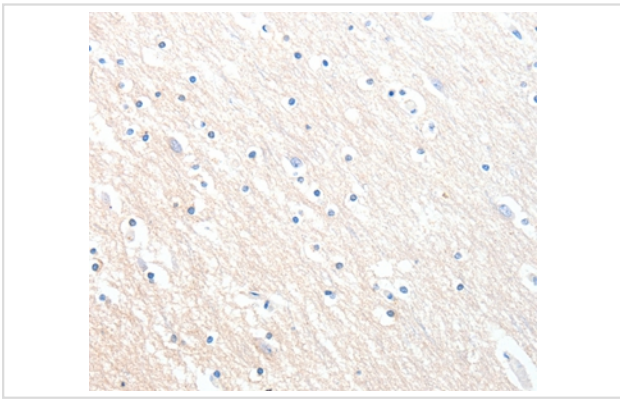
Western blotting: 1:200-1:1000

Immunohistochemistry: 1:25-1:100

## Images



Gel: 10%SDS-PAGE  
Lysate: 40ug OP9 cell  
Primary antibody: 1/400 dilution  
Secondary antibody dilution: 1/8000  
Exposure time: 10 minutes



Immunohistochemical analysis of paraffin-embedded Human brain tissue using #36990 at dilution 1/60.

## Background

Motilin is a 22 amino acid peptide hormone expressed throughout the gastrointestinal (GI) tract. The protein encoded by this gene is a motilin receptor which is a member of the G-protein coupled receptor 1 family. This member is a multi-pass transmembrane protein, and is an important therapeutic target for the treatment of hypomotility disorders.?

Note: This product is for in vitro research use only