

CDH2 Antibody

Catalog No: #36995

Orders: order@signalwayantibody.com

Support: tech@signalwayantibody.com

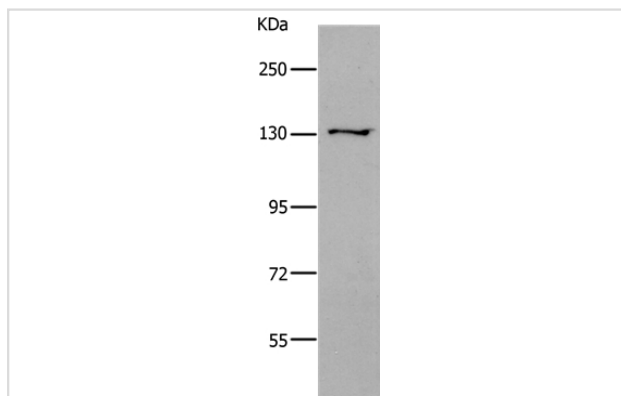
Description

Product Name	CDH2 Antibody
Host Species	Rabbit
Clonality	Polyclonal
Purification	Antigen affinity purification.
Applications	WB
Species Reactivity	Hu
Specificity	The antibody detects endogenous levels of total CDH2 protein.
Immunogen Type	Peptide
Immunogen Description	Synthetic peptide corresponding to a region derived from internal residues of human cadherin 2, type 1, N-cadherin (neuronal)
Target Name	CDH2
Other Names	CDHN; NCAD; CD325; CDw325
Accession No.	Swiss-Prot#: P19022NCBI Gene ID: 1000Gene Accssion: NP_001783
Uniprot	P19022
GeneID	1000;
SDS-PAGE MW	100kd
Concentration	0.9mg/ml
Formulation	Rabbit IgG in pH7.4 PBS, 0.05% NaN ₃ , 40% Glycerol.
Storage	Store at -20°C

Application Details

Western blotting: 1:200-1:1000

Images



Gel: 10%SDS-PAGE

Lysates (from left to right): Human brain malignant glioma tissue

Amount of lysate: 40ug per lane

Primary antibody: 1/450 dilution

Secondary antibody dilution: 1/8000

Exposure time: 2 minutes

Background

This gene is a classical cadherin from the cadherin superfamily. The encoded protein is a calcium dependent cell-cell adhesion glycoprotein comprised

of five extracellular cadherin repeats, a transmembrane region and a highly conserved cytoplasmic tail. The protein functions during gastrulation and is required for establishment of left-right asymmetry. At certain central nervous system synapses, presynaptic to postsynaptic adhesion is mediated at least in part by this gene product.?

Note: This product is for in vitro research use only