

NBEA Antibody

Catalog No: #36997

Orders: order@signalwayantibody.comSupport: tech@signalwayantibody.com

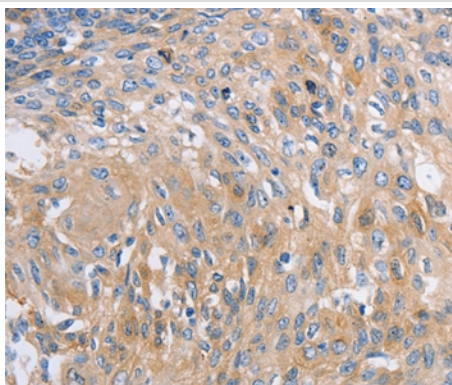
Description

Product Name	NBEA Antibody
Host Species	Rabbit
Clonality	Polyclonal
Purification	Antigen affinity purification.
Applications	IHC
Species Reactivity	Hu Ms
Specificity	The antibody detects endogenous levels of total NBEA protein.
Immunogen Type	Peptide
Immunogen Description	Synthetic peptide corresponding to a region derived from internal residues of human neurobeachin
Target Name	NBEA
Other Names	BCL8B; LYST2
Accession No.	Swiss-Prot#: Q8NFP9NCBI Gene ID: 26960Gene Accssion: NP_056493
Uniprot	Q8NFP9
GeneID	26960;
Concentration	1.7mg/ml
Formulation	Rabbit IgG in pH7.4 PBS, 0.05% NaN ₃ , 40% Glycerol.
Storage	Store at -20°C

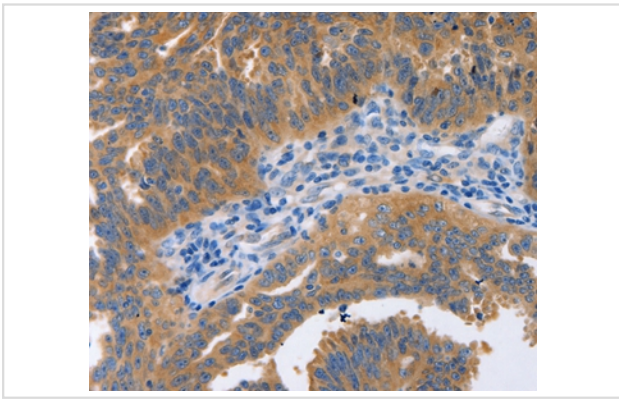
Application Details

Immunohistochemistry: 1:25-1:100

Images



Immunohistochemical analysis of paraffin-embedded Human cervical cancer tissue using #36997 at dilution 1/60.



Immunohistochemical analysis of paraffin-embedded Human ovarian cancer tissue using #36997 at dilution 1/60.

Background

This gene encodes a member of a large, diverse group of A-kinase anchor proteins that target the activity of protein kinase A to specific subcellular sites by binding to its type II regulatory subunits. Brain-specific expression and coat protein-like membrane recruitment of a highly similar protein in mouse suggest an involvement in neuronal post-Golgi membrane traffic. Mutations in this gene may be associated with a form of autism. This gene and its expression are frequently disrupted in patients with multiple myeloma. Alternative splicing results in multiple transcript variants encoding distinct isoforms. Additional transcript variants may exist, but their full-length nature has not been determined.

Note: This product is for in vitro research use only