

GRIN1 Antibody

Catalog No: #37001

Orders: order@signalwayantibody.comSupport: tech@signalwayantibody.com

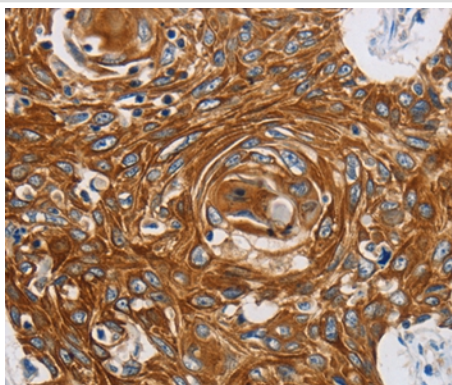
Description

Product Name	GRIN1 Antibody
Host Species	Rabbit
Clonality	Polyclonal
Purification	Antigen affinity purification.
Applications	IHC
Species Reactivity	Hu Ms Rt
Specificity	The antibody detects endogenous levels of total GRIN1 protein.
Immunogen Type	Peptide
Immunogen Description	Synthetic peptide corresponding to a region derived from internal residues of human glutamate receptor, ionotropic, N-methyl D-aspartate 1
Target Name	GRIN1
Other Names	NR1; MRD8; GluN1; NMDA1; NMDAR1
Accession No.	Swiss-Prot#: Q05586NCBI Gene ID: 2902Gene Accssion: NP_000823
Uniprot	Q05586
GeneID	2902;
Concentration	1.7mg/ml
Formulation	Rabbit IgG in pH7.4 PBS, 0.05% NaN ₃ , 40% Glycerol.
Storage	Store at -20°C

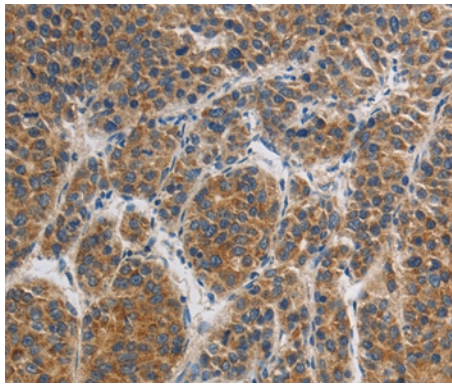
Application Details

Immunohistochemistry: 1:50-1:200

Images



Immunohistochemical analysis of paraffin-embedded Human liver cancer tissue using #37001 at dilution 1/45.



Immunohistochemical analysis of paraffin-embedded Human esophagus cancer tissue using #37001 at dilution 1/45.

Background

The protein encoded by this gene is a critical subunit of N-methyl-D-aspartate receptors, members of the glutamate receptor channel superfamily which are heteromeric protein complexes with multiple subunits arranged to form a ligand-gated ion channel. These subunits play a key role in the plasticity of synapses, which is believed to underlie memory and learning. Cell-specific factors are thought to control expression of different isoforms, possibly contributing to the functional diversity of the subunits. Alternatively spliced transcript variants have been described.

Note: This product is for in vitro research use only