

GRIN2B Antibody

Catalog No: #37002

Orders: order@signalwayantibody.com

Support: tech@signalwayantibody.com

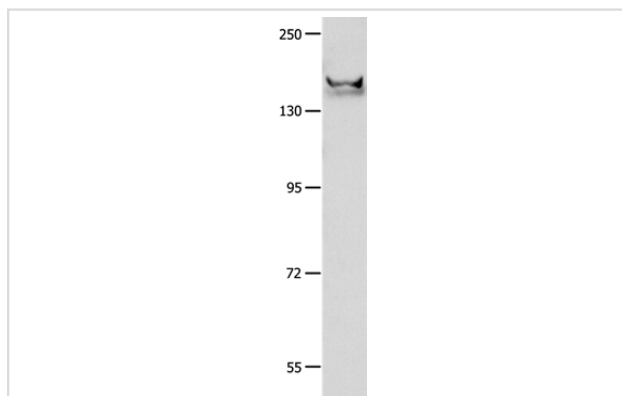
Description

Product Name	GRIN2B Antibody
Host Species	Rabbit
Clonality	Polyclonal
Purification	Antigen affinity purification.
Applications	WB
Species Reactivity	Hu Ms
Specificity	The antibody detects endogenous levels of total GRIN2B protein.
Immunogen Type	Peptide
Immunogen Description	Synthetic peptide corresponding to a region derived from internal residues of human glutamate receptor, ionotropic, N-methyl D-aspartate 2B
Target Name	GRIN2B
Other Names	MRD6; NR2B; hNR3; GluN2B; NMDAR2B
Accession No.	Swiss-Prot#: Q13224NCBI Gene ID: 2904Gene Accssion: NP_000825
Uniprot	Q13224
GeneID	2904;
SDS-PAGE MW	166kd
Concentration	1.4mg/ml
Formulation	Rabbit IgG in pH7.4 PBS, 0.05% NaN ₃ , 40% Glycerol.
Storage	Store at -20°C

Application Details

Western blotting: 1:500-1:2000

Images



Gel: 8%SDS-PAGE
 Lysates (from left to right): Mouse brain tissue
 Amount of lysate: 40ug per lane
 Primary antibody: 1/700 dilution
 Secondary antibody dilution: 1/8000
 Exposure time: 40 seconds

Background

N-methyl-D-aspartate (NMDA) receptors are a class of ionotropic glutamate receptors. NMDA receptor channel has been shown to be involved in

long-term potentiation, an activity-dependent increase in the efficiency of synaptic transmission thought to underlie certain kinds of memory and learning. NMDA receptor channels are heteromers composed of three different subunits: NR1 (GRIN1), NR2 (GRIN2A, GRIN2B, GRIN2C, or GRIN2D) and NR3 (GRIN3A or GRIN3B). The NR2 subunit acts as the agonist binding site for glutamate. This receptor is the predominant excitatory neurotransmitter receptor in the mammalian brain.?

Note: This product is for in vitro research use only