

## P2RY1 Antibody

Catalog No: #37007

Orders: order@signalwayantibody.com

Support: tech@signalwayantibody.com

## Description

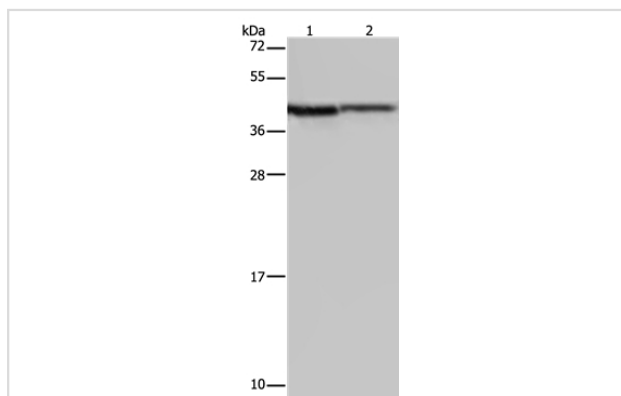
Product Name	P2RY1 Antibody
Host Species	Rabbit
Clonality	Polyclonal
Purification	Antigen affinity purification.
Applications	WB IHC
Species Reactivity	Hu Ms Rt
Specificity	The antibody detects endogenous levels of total P2RY1 protein.
Immunogen Type	Peptide
Immunogen Description	Synthetic peptide corresponding to a region derived from internal residues of human purinergic receptor P2Y, G-protein coupled, 1
Target Name	P2RY1
Other Names	P2Y1
Accession No.	Swiss-Prot#: P47900NCBI Gene ID: 5028Gene Accssion: NP_002554/P47900
Uniprot	P47900
GeneID	5028;
SDS-PAGE MW	42kd
Concentration	2.8mg/ml
Formulation	Rabbit IgG in pH7.4 PBS, 0.05% NaN <sub>3</sub> , 40% Glycerol.
Storage	Store at -20°C

## Application Details

Western blotting: 1:200-1:1000

Immunohistochemistry: 1:50-1:200

## Images



Gel: 10%SDS-PAGE

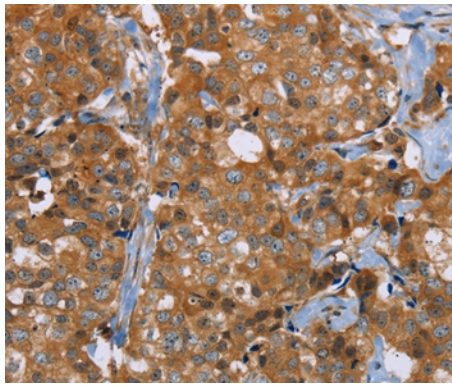
Lysates (from left to right): A549 cell and mouse liver tissue

Amount of lysate: 40ug per lane

Primary antibody: 1/200 dilution

Secondary antibody dilution: 1/8000

Exposure time: 30 seconds



Immunohistochemical analysis of paraffin-embedded Human breast cancer tissue using #37007 at dilution 1/40.

## Background

The product of this gene belongs to the family of G-protein coupled receptors. This family has several receptor subtypes with different pharmacological selectivity, which overlaps in some cases, for various adenosine and uridine nucleotides. This receptor functions as a receptor for extracellular ATP and ADP. In platelets binding to ADP leads to mobilization of intracellular calcium ions via activation of phospholipase C, a change in platelet shape, and probably to platelet aggregation.

Note: This product is for in vitro research use only