

P2RY4 Antibody

Catalog No: #37008

Orders: order@signalwayantibody.com

Support: tech@signalwayantibody.com

Description

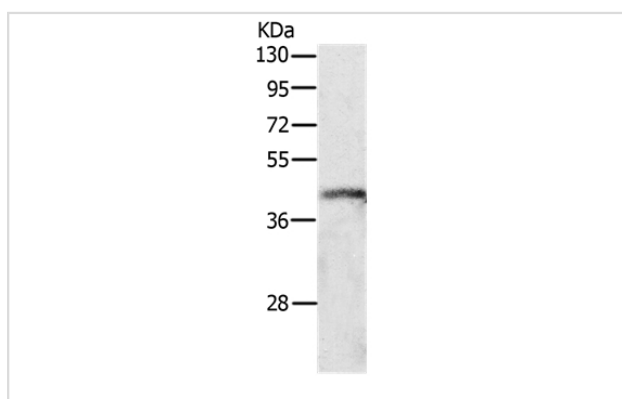
Product Name	P2RY4 Antibody
Host Species	Rabbit
Clonality	Polyclonal
Purification	Antigen affinity purification.
Applications	WB IHC
Species Reactivity	Hu
Specificity	The antibody detects endogenous levels of total P2RY4 protein.
Immunogen Type	Peptide
Immunogen Description	Synthetic peptide corresponding to residues near the C terminal of human pyrimidnergic receptor P2Y, G-protein coupled, 4
Target Name	P2RY4
Other Names	NRU; P2P; UNR; P2Y4
Accession No.	Swiss-Prot#: P51582NCBI Gene ID: 5030Gene Accssion: NP_002556
Uniprot	P51582
GeneID	5030;
SDS-PAGE MW	41kd
Concentration	1mg/ml
Formulation	Rabbit IgG in pH7.4 PBS, 0.05% NaN ₃ , 40% Glycerol.
Storage	Store at -20°C

Application Details

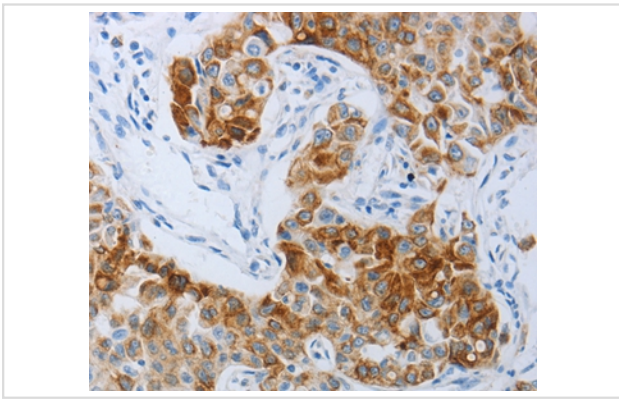
Western blotting: 1:200-1:1000

Immunohistochemistry: 1:25-1:100

Images



Gel: 10%SDS-PAGE
Lysate: 40ug K562 cell
Primary antibody: 1/500 dilution
Secondary antibody dilution: 1/8000
Exposure time: 1 minute



Immunohistochemical analysis of paraffin-embedded Human lung cancer tissue using #37008 at dilution 1/30.

Background

The product of this gene belongs to the family of G-protein coupled receptors. This family has several receptor subtypes with different pharmacological selectivity, which overlaps in some cases, for various adenosine and uridine nucleotides. This receptor is responsive to uridine nucleotides, partially responsive to ATP, and not responsive to ADP.

Note: This product is for in vitro research use only