

P2RY6 Antibody

Catalog No: #37009

Orders: order@signalwayantibody.com

Support: tech@signalwayantibody.com

Description

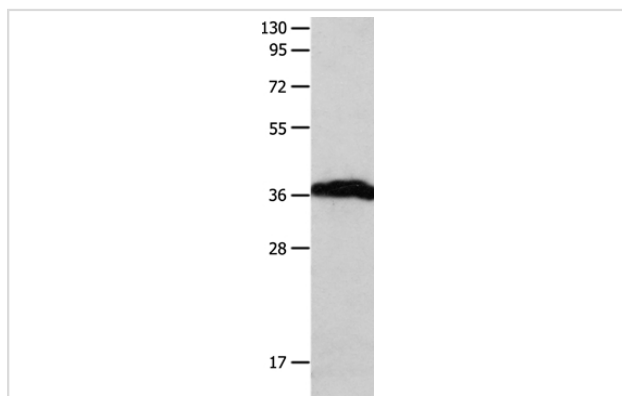
Product Name	P2RY6 Antibody
Host Species	Rabbit
Clonality	Polyclonal
Purification	Antigen affinity purification.
Applications	WB IHC
Species Reactivity	Hu Ms Rt
Specificity	The antibody detects endogenous levels of total P2RY6 protein.
Immunogen Type	Peptide
Immunogen Description	Synthetic peptide corresponding to a region derived from internal residues of human pyrimidinerbic receptor P2Y, G-protein coupled, 6
Target Name	P2RY6
Other Names	P2Y6
Accession No.	Swiss-Prot#: Q15077NCBI Gene ID: 5031Gene Accssion: NP_004145
Uniprot	Q15077
GeneID	5031;
SDS-PAGE MW	36kd
Concentration	1.1mg/ml
Formulation	Rabbit IgG in pH7.4 PBS, 0.05% NaN ₃ , 40% Glycerol.
Storage	Store at -20°C

Application Details

Western blotting: 1:500-1:2000

Immunohistochemistry: 1:50-1:200

Images



Gel: 10%SDS-PAGE

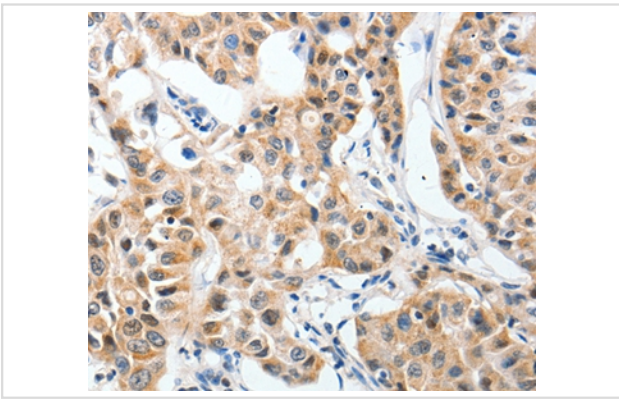
Lysates (from left to right): Human brain malignant glioma tissue

Amount of lysate: 40ug per lane

Primary antibody: 1/550 dilution

Secondary antibody dilution: 1/8000

Exposure time: 1 minute



Immunohistochemical analysis of paraffin-embedded Human lung cancer tissue using #37009 at dilution 1/40.

Background

The product of this gene belongs to the family of G-protein coupled receptors. This family has several receptor subtypes with different pharmacological selectivity, which overlaps in some cases, for various adenosine and uridine nucleotides. This receptor is responsive to UDP, partially responsive to UTP and ADP, and not responsive to ATP. Four transcript variants encoding the same isoform have been identified for this gene

Note: This product is for in vitro research use only