

## SHBG Antibody

Catalog No: #37027

Orders: [order@signalwayantibody.com](mailto:order@signalwayantibody.com)Support: [tech@signalwayantibody.com](mailto:tech@signalwayantibody.com)

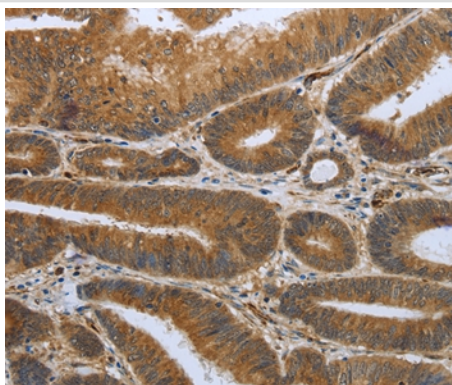
## Description

Product Name	SHBG Antibody
Host Species	Rabbit
Clonality	Polyclonal
Purification	Antigen affinity purification.
Applications	IHC
Species Reactivity	Hu
Specificity	The antibody detects endogenous levels of total SHBG protein.
Immunogen Type	Peptide
Immunogen Description	Synthetic peptide corresponding to a region derived from internal residues of human Sex hormone-binding globulin
Target Name	SHBG
Other Names	ABP; SBP; TEBG
Accession No.	Swiss-Prot#: P04278 NCBI Gene ID: 6462Gene Accssion: NP_001031
Uniprot	P04278
GeneID	6462;
Concentration	1.8mg/ml
Formulation	Rabbit IgG in pH7.4 PBS, 0.05% NaN <sub>3</sub> , 40% Glycerol.
Storage	Store at -20°C

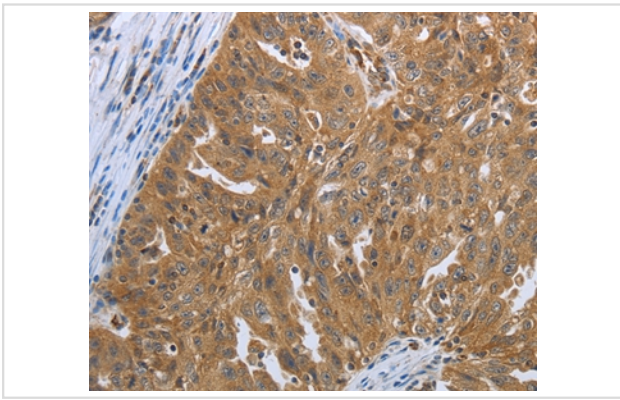
## Application Details

Immunohistochemistry: 1:25-1:100

## Images



Immunohistochemical analysis of paraffin-embedded Human cervical cancer tissue using #37027 at dilution 1/20.



Immunohistochemical analysis of paraffin-embedded Human ovarian cancer tissue using #37027 at dilution 1/20.

## Background

This gene encodes a steroid binding protein that was first described as a plasma protein secreted by the liver but is now thought to participate in the regulation of steroid responses. The encoded protein binds each steroid molecule as a dimer formed from identical or nearly identical monomers. The use of alternate promoters and alternatively spliced transcripts have been described. Multiple transcript variants encoding different isoforms have been found for this gene.

Note: This product is for in vitro research use only