

SLC4A7 Antibody

Catalog No: #37029

Orders: order@signalwayantibody.comSupport: tech@signalwayantibody.com

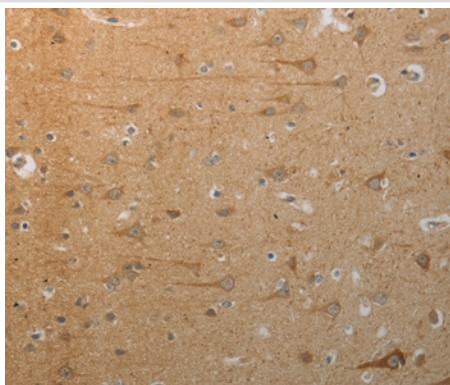
Description

Product Name	SLC4A7 Antibody
Host Species	Rabbit
Clonality	Polyclonal
Purification	Antigen affinity purification.
Applications	IHC
Species Reactivity	Hu
Specificity	The antibody detects endogenous levels of total SLC4A7 protein.
Immunogen Type	Peptide
Immunogen Description	Synthetic peptide corresponding to a region derived from internal residues of human Solute carrier family 4, sodium bicarbonate cotransporter, member 7
Target Name	SLC4A7
Other Names	NBC2; NBC3; SBC2; NBCN1; SLC4A6
Accession No.	Swiss-Prot#: Q9Y6M7 NCBI Gene ID: 9497Gene Accssion: NP_003606
Uniprot	Q9Y6M7
GeneID	9497;
Concentration	1.8mg/ml
Formulation	Rabbit IgG in pH7.4 PBS, 0.05% NaN ₃ , 40% Glycerol.
Storage	Store at -20°C

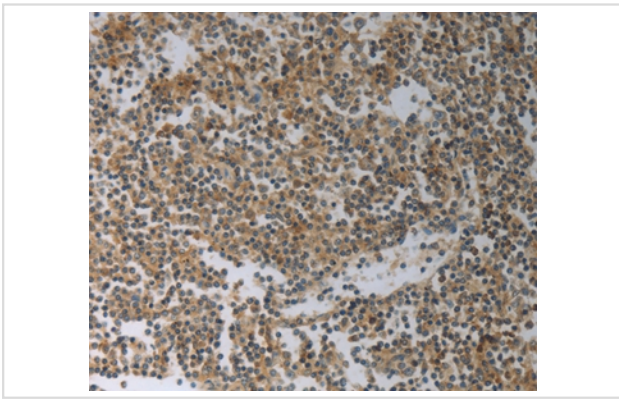
Application Details

Immunohistochemistry: 1:50-1:200

Images



Immunohistochemical analysis of paraffin-embedded Human brain tissue using #37029 at dilution 1/50.



Immunohistochemical analysis of paraffin-embedded Human tonsil tissue using #37029 at dilution 1/50.

Background

This locus encodes a sodium bicarbonate cotransporter. The encoded transmembrane protein appears to transport sodium and bicarbonate ions in a 1:1 ratio, and is thus considered an electroneutral cotransporter. The encoded protein likely plays a critical role in regulation of intracellular pH involved in visual and auditory sensory transmission. Alternatively spliced transcript variants encoding distinct isoforms have been described.

Note: This product is for in vitro research use only