

## SLC1A4 Antibody

Catalog No: #37031

Orders: order@signalwayantibody.com

Support: tech@signalwayantibody.com

## Description

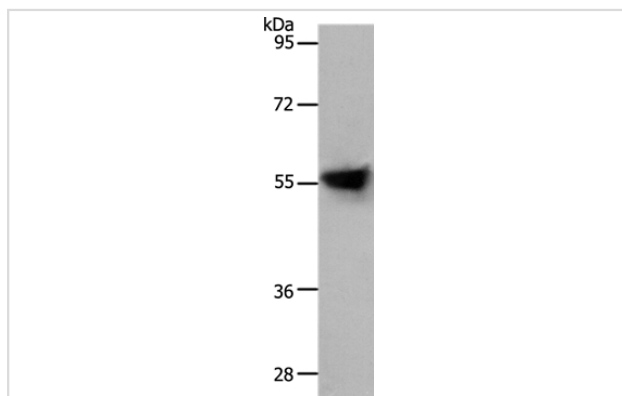
Product Name	SLC1A4 Antibody
Host Species	Rabbit
Clonality	Polyclonal
Purification	Antigen affinity purification.
Applications	WB IHC
Species Reactivity	Hu
Specificity	The antibody detects endogenous levels of total SLC1A4 protein.
Immunogen Type	Peptide
Immunogen Description	Synthetic peptide corresponding to residues near the C terminal of human Solute carrier family 1 (glutamate/neutral amino acid transporter), member 4
Target Name	SLC1A4
Other Names	SATT; ASCT1
Accession No.	Swiss-Prot#: P43007NCBI Gene ID: 6509Gene Accssion: NP_003029
Uniprot	P43007
GeneID	6509;
SDS-PAGE MW	56kd
Concentration	1.6mg/ml
Formulation	Rabbit IgG in pH7.4 PBS, 0.05% NaN <sub>3</sub> , 40% Glycerol.
Storage	Store at -20°C

## Application Details

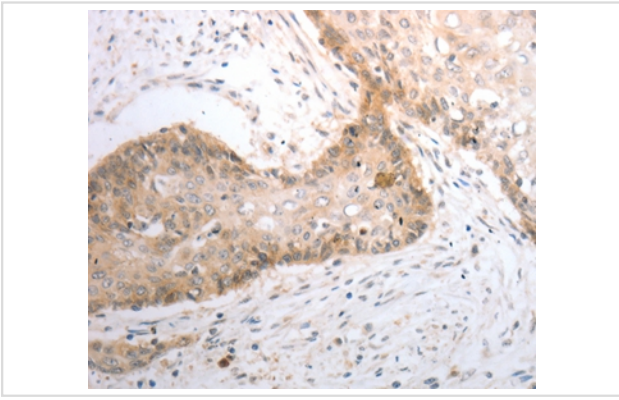
Western blotting: 1:500-1:2000

Immunohistochemistry: 1:25-1:100

## Images



Gel: 10+12%SDS-PAGE  
 Lysates (from left to right): Human liver cancer tissue  
 Amount of lysate: 30ug per lane  
 Primary antibody: 1/800 dilution  
 Secondary antibody dilution: 1/8000  
 Exposure time: 20 seconds



Immunohistochemical analysis of paraffin-embedded Human cervical cancer tissue using #37031 at dilution 1/40.

## Background

Neutral amino acid transporter A is a protein that in humans is encoded by the SLC1A4 gene. In melanocytic cells SLC1A4 gene expression may be regulated by MITF. ASCT1 does not transport glutamate or aspartate but alanine, serine, cysteine, and threonine instead. ASCT1 transporter functions primarily as an amino acid exchanger. Transport is associated with a chloride channel activity that is thermodynamically uncoupled from amino acid transport.

Note: This product is for in vitro research use only