

SLC1A5 Antibody

Catalog No: #37032

Orders: order@signalwayantibody.com

Support: tech@signalwayantibody.com

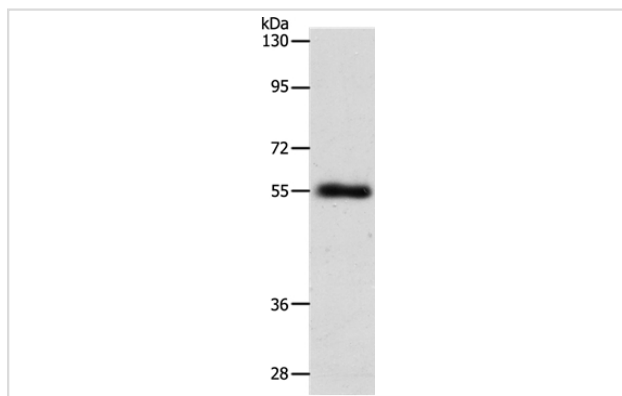
Description

Product Name	SLC1A5 Antibody
Host Species	Rabbit
Clonality	Polyclonal
Purification	Antigen affinity purification.
Applications	WB
Species Reactivity	Hu Ms
Specificity	The antibody detects endogenous levels of total SLC1A5 protein.
Immunogen Type	Peptide
Immunogen Description	Synthetic peptide corresponding to a region derived from internal residues of human Solute carrier family 1 (neutral amino acid transporter), member 5
Target Name	SLC1A5
Other Names	R16; AAAT; ATBO; M7V1; RDRC; ASCT2; M7VS1
Accession No.	Swiss-Prot#: Q15758NCBI Gene ID: 6510Gene Accssion: NP_005619
Uniprot	Q15758
GeneID	6510;
SDS-PAGE MW	57kd
Concentration	1.2mg/ml
Formulation	Rabbit IgG in pH7.4 PBS, 0.05% NaN ₃ , 40% Glycerol.
Storage	Store at -20°C

Application Details

Western blotting: 1:500-1:2000

Images



Gel: 8%SDS-PAGE
 Lysates (from left to right): Mouse lung tissue
 Amount of lysate: 40ug per lane
 Primary antibody: 1/600 dilution
 Secondary antibody dilution: 1/8000
 Exposure time: 10 minutes

Background

Neutral amino acid transporter B(0) is a protein that in humans is encoded by the SLC1A5 gene. Has a broad substrate specificity, a preference for

zwitterionic amino acids, and a sodium-dependence. It accepts as substrates all neutral amino acids, including glutamine, asparagine, and branched-chain and aromatic amino acids, and excludes methylated amino acids, anionic amino acids, and cationic amino acids. Acts as a cell surface receptor for feline endogenous virus RD114, baboon M7 endogenous virus and type D simian retroviruses.

Note: This product is for in vitro research use only