

SLC44A1 Antibody

Catalog No: #37033

Orders: order@signalwayantibody.comSupport: tech@signalwayantibody.com

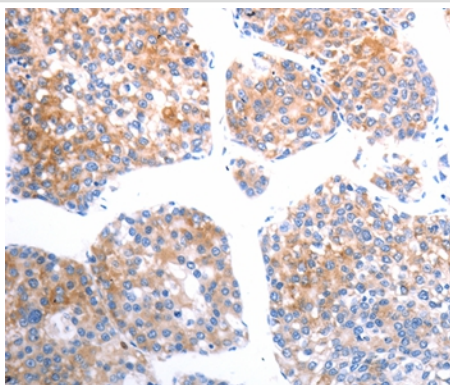
Description

Product Name	SLC44A1 Antibody
Host Species	Rabbit
Clonality	Polyclonal
Purification	Antigen affinity purification.
Applications	IHC
Species Reactivity	Hu Ms Rt
Specificity	The antibody detects endogenous levels of total SLC44A1 protein.
Immunogen Type	Peptide
Immunogen Description	Synthetic peptide corresponding to a region derived from internal residues of human Solute carrier family 44, member 1
Target Name	SLC44A1
Other Names	CD92; CTL1; CDW92; CHTL1; RP11-287A8.1
Accession No.	Swiss-Prot#: Q8WWI5 NCBI Gene ID: 23446Gene Accssion: NP_536856
Uniprot	Q8WWI5
GeneID	23446;
Concentration	0.8mg/ml
Formulation	Rabbit IgG in pH7.4 PBS, 0.05% NaN ₃ , 40% Glycerol.
Storage	Store at -20°C

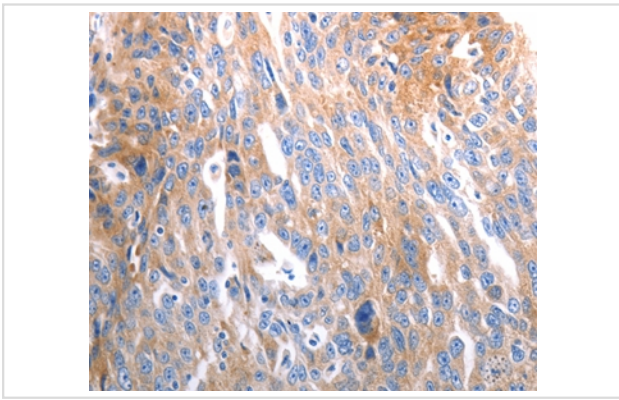
Application Details

Immunohistochemistry: 1:25-1:100

Images



Immunohistochemical analysis of paraffin-embedded Human liver cancer tissue using #37033 at dilution 1/25.



Immunohistochemical analysis of paraffin-embedded Human ovarian cancer tissue using #37033 at dilution 1/25.

Background

This gene is Choline transporter. It belongs to the CTL (choline transporter-like) family. May be involved in membrane synthesis and myelin production. It is taken up with high affinity at cholinergic nerve terminals in a sodium-dependent manner. Cloned CTL1, a suppressor for a yeast choline transport mutation, from a Torpedo electric lobe yeast expression library by functional complementation.

Note: This product is for in vitro research use only