

SLC41A2 Antibody

Catalog No: #37034

Orders: order@signalwayantibody.comSupport: tech@signalwayantibody.com

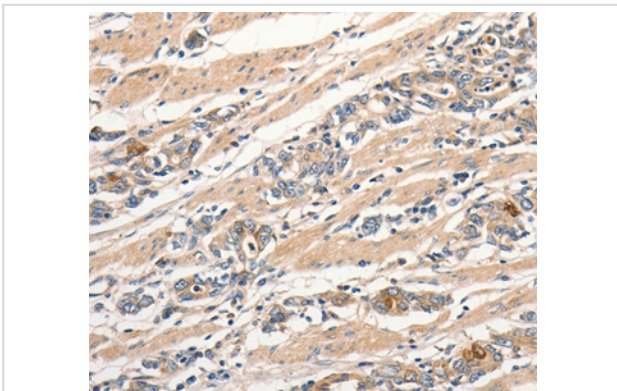
Description

Product Name	SLC41A2 Antibody
Host Species	Rabbit
Clonality	Polyclonal
Purification	Antigen affinity purification.
Applications	IHC
Species Reactivity	Hu
Specificity	The antibody detects endogenous levels of total SLC41A2 protein.
Immunogen Type	Peptide
Immunogen Description	Synthetic peptide corresponding to residues near the N terminal of human Solute carrier family 41, member 2
Target Name	SLC41A2
Other Names	SLC41A2-L1
Accession No.	Swiss-Prot#: Q96JW4NCBI Gene ID: 84102Gene Accssion: NP_115524
Uniprot	Q96JW4
GeneID	84102;
Concentration	1.1mg/ml
Formulation	Rabbit IgG in pH7.4 PBS, 0.05% NaN ₃ , 40% Glycerol.
Storage	Store at -20°C

Application Details

Immunohistochemistry: 1:25-1:100

Images



Immunohistochemical analysis of paraffin-embedded Human gastric cancer tissue using #37034 at dilution 1/30.

Background

This gene belongs to the SLC41A transporter family. It acts as a plasma-membrane magnesium transporter. SLC41A2 functions as a plasma-membrane Mg²⁺ transporter in vertebrate cells.

Note: This product is for in vitro research use only