

## SLC34A2 Antibody

Catalog No: #37035

Orders: [order@signalwayantibody.com](mailto:order@signalwayantibody.com)Support: [tech@signalwayantibody.com](mailto:tech@signalwayantibody.com)

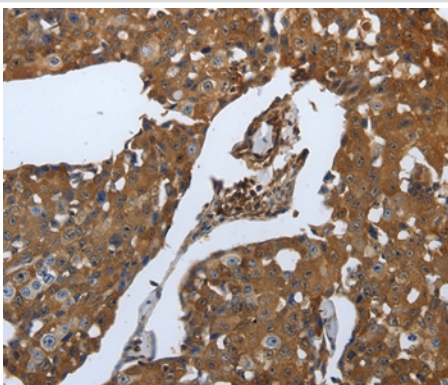
## Description

Product Name	SLC34A2 Antibody
Host Species	Rabbit
Clonality	Polyclonal
Purification	Antigen affinity purification.
Applications	IHC
Species Reactivity	Hu
Specificity	The antibody detects endogenous levels of total SLC34A2 protein.
Immunogen Type	Peptide
Immunogen Description	Synthetic peptide corresponding to residues near the C terminal of human Solute carrier family 34 (sodium phosphate), member 2
Target Name	SLC34A2
Other Names	NPTIIb; NAPI-3B; NAPI-IIb
Accession No.	Swiss-Prot#: O95436NCBI Gene ID: 10568Gene Accssion: NP_001171469
Uniprot	O95436
GeneID	10568;
Concentration	2.4mg/ml
Formulation	Rabbit IgG in pH7.4 PBS, 0.05% NaN <sub>3</sub> , 40% Glycerol.
Storage	Store at -20°C

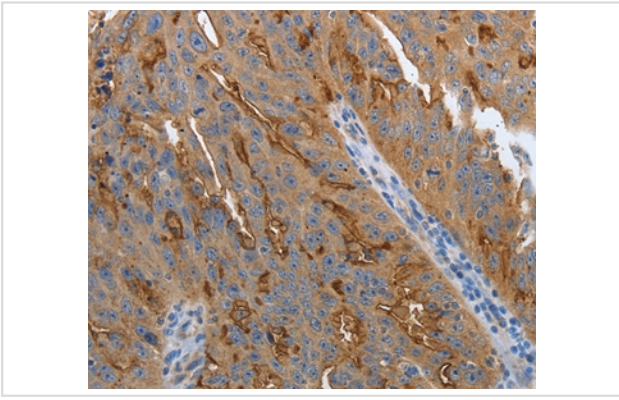
## Application Details

Immunohistochemistry: 1:100-1:300

## Images



Immunohistochemical analysis of paraffin-embedded Human breast cancer tissue using #37035 at dilution 1/70.



Immunohistochemical analysis of paraffin-embedded Human ovarian cancer tissue using #37035 at dilution 1/70.

## Background

The protein encoded by this gene is a pH-sensitive sodium-dependent phosphate transporter. Phosphate uptake is increased at lower pH. Defects in this gene are a cause of pulmonary alveolar microlithiasis. Three transcript variants encoding two different isoforms have been found for this gene.

Note: This product is for in vitro research use only