

## SMAD7 Antibody

Catalog No: #37036

Orders: [order@signalwayantibody.com](mailto:order@signalwayantibody.com)Support: [tech@signalwayantibody.com](mailto:tech@signalwayantibody.com)

## Description

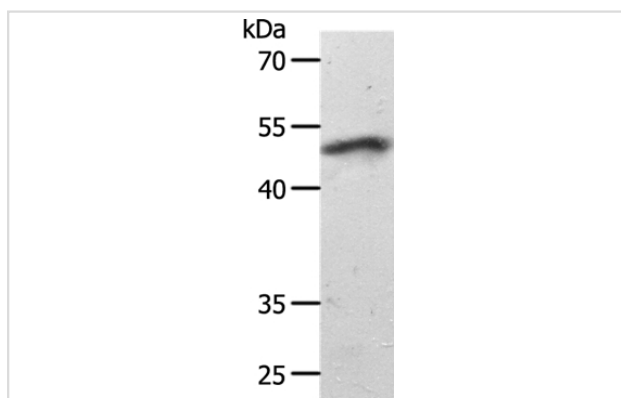
Product Name	SMAD7 Antibody
Host Species	Rabbit
Clonality	Polyclonal
Purification	Antigen affinity purification.
Applications	WB IHC
Species Reactivity	Hu Ms Rt
Specificity	The antibody detects endogenous levels of total SMAD7 protein.
Immunogen Type	Peptide
Immunogen Description	Synthetic peptide corresponding to a region derived from internal residues of human SMAD family member 7
Target Name	SMAD7
Other Names	CRCS3; MADH7; MADH8
Accession No.	Swiss-Prot#: O15105NCBI Gene ID: 4092Gene Accssion: NP_005895
Uniprot	O15105
GeneID	4092;
SDS-PAGE MW	46kd
Concentration	2.1mg/ml
Formulation	Rabbit IgG in pH7.4 PBS, 0.05% NaN <sub>3</sub> , 40% Glycerol.
Storage	Store at -20°C

## Application Details

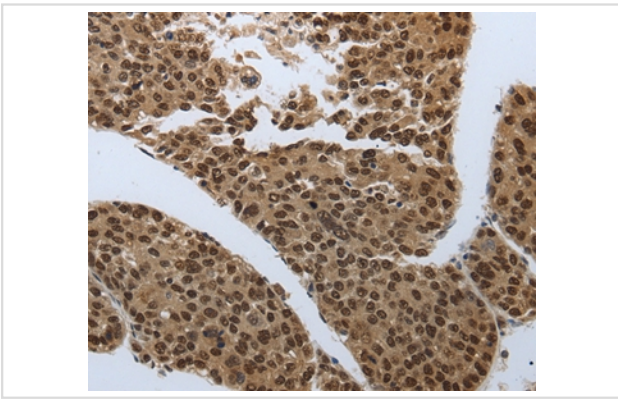
Western blotting: 1:500-1:2000

Immunohistochemistry: 1:50-1:200

## Images



Gel: 10%SDS-PAGE  
 Lysates (from left to right): Mouse heart tissue  
 Amount of lysate: 40ug per lane  
 Primary antibody: 1/1000 dilution  
 Secondary antibody dilution: 1/8000  
 Exposure time: 40 seconds



Immunohistochemical analysis of paraffin-embedded Human liver cancer tissue using #37036 at dilution 1/60.

## Background

The protein encoded by this gene is a nuclear protein that binds the E3 ubiquitin ligase SMURF2. Upon binding, this complex translocates to the cytoplasm, where it interacts with TGF-beta receptor type-1 (TGFB1), leading to the degradation of both the encoded protein and TGFB1. Expression of this gene is induced by TGFB1. Variations in this gene are a cause of susceptibility to colorectal cancer type 3 (CRCS3). Several transcript variants encoding different isoforms have been found for this gene.

Note: This product is for in vitro research use only