

SUN5 Antibody

Catalog No: #37040

Orders: order@signalwayantibody.comSupport: tech@signalwayantibody.com

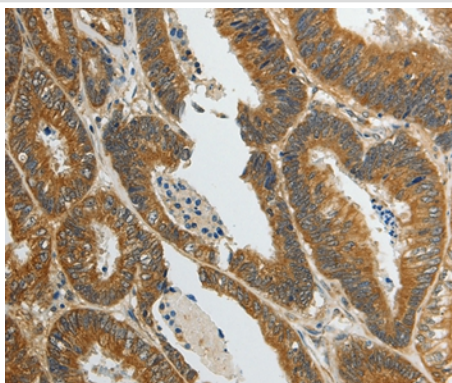
Description

| | |
|-----------------------|--|
| Product Name | SUN5 Antibody |
| Host Species | Rabbit |
| Clonality | Polyclonal |
| Purification | Antigen affinity purification. |
| Applications | IHC |
| Species Reactivity | Hu |
| Specificity | The antibody detects endogenous levels of total SUN5 protein. |
| Immunogen Type | Peptide |
| Immunogen Description | Synthetic peptide corresponding to a region derived from internal residues of human Sad1 and UNC84 domain containing 5 |
| Target Name | SUN5 |
| Other Names | SPAG4L; TSARG4; dJ726C3.1 |
| Accession No. | Swiss-Prot#: Q8TC36NCBI Gene ID: 140732Gene Accssion: NP_542406 |
| Uniprot | Q8TC36 |
| GeneID | 140732; |
| Concentration | 2.6mg/ml |
| Formulation | Rabbit IgG in pH7.4 PBS, 0.05% NaN ₃ , 40% Glycerol. |
| Storage | Store at -20°C |

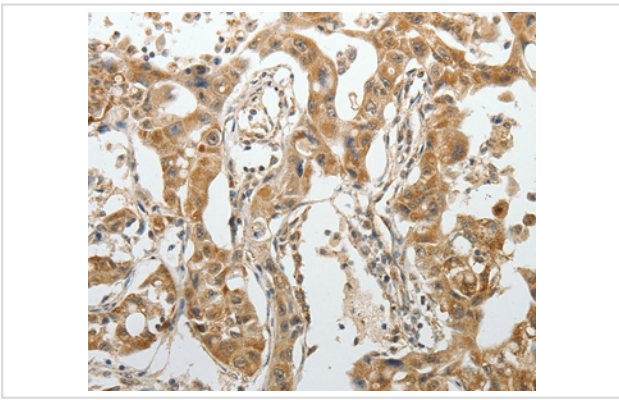
Application Details

Immunohistochemistry: 1:100-1:300

Images



Immunohistochemical analysis of paraffin-embedded Human colon cancer tissue using #37040 at dilution 1/70.



Immunohistochemical analysis of paraffin-embedded Human lung cancer tissue using #37040 at dilution 1/70.

Background

SPAG4--has been identified as nuclear envelope (NE) proteins. Using bioinformatic analysis indicated that SPAG4L contained a conserved SUN domain in the C-terminal. Subcellular localization analysis indicated that the expression of green fluorescent protein-labeled full-length SPAG4L was localized to the NE and the endoplasmic reticulum (ER). Spag4L express in meiosis I and II stages, possibly suggesting that Spag4L is involved in NE reconstitution and nuclear migration occurring during the process of spermatocyte division.

Note: This product is for in vitro research use only