

SREBF2 Antibody

Catalog No: #37043

Orders: order@signalwayantibody.comSupport: tech@signalwayantibody.com

Description

Product Name	SREBF2 Antibody
Host Species	Rabbit
Clonality	Polyclonal
Purification	Antigen affinity purification.
Applications	IHC
Species Reactivity	Hu
Specificity	The antibody detects endogenous levels of total SREBF2 protein.
Immunogen Type	Peptide
Immunogen Description	Synthetic peptide corresponding to a region derived from internal residues of human sterol regulatory element binding transcription factor 2
Target Name	SREBF2
Other Names	SREBP2; bHLHd2
Accession No.	Swiss-Prot#: Q12772NCBI Gene ID: 6721Gene Accssion: NP_004590
Uniprot	Q12772
GeneID	6721;
Concentration	1.1mg/ml
Formulation	Rabbit IgG in pH7.4 PBS, 0.05% NaN ₃ , 40% Glycerol.
Storage	Store at -20°C

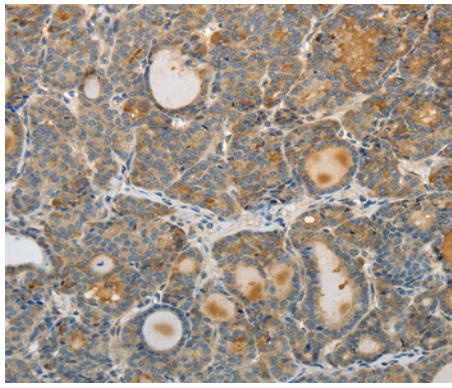
Application Details

Immunohistochemistry: 1:50-1:200

Images



Immunohistochemical analysis of paraffin-embedded Human brain tissue using #37043 at dilution 1/30.



Immunohistochemical analysis of paraffin-embedded Human thyroid cancer tissue using #37043 at dilution 1/30.

Background

This gene encodes a ubiquitously expressed transcription factor that controls cholesterol homeostasis by stimulating transcription of sterol-regulated genes. The encoded protein contains a basic helix-loop-helix-leucine zipper (bHLH-Zip) domain.

Note: This product is for in vitro research use only