

TOP1MT Antibody

Catalog No: #37052

Orders: order@signalwayantibody.comSupport: tech@signalwayantibody.com

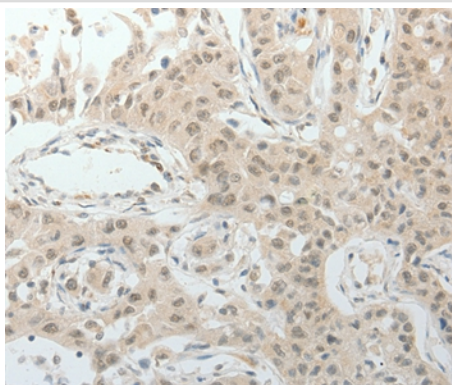
Description

Product Name	TOP1MT Antibody
Host Species	Rabbit
Clonality	Polyclonal
Purification	Antigen affinity purification.
Applications	IHC
Species Reactivity	Hu
Specificity	The antibody detects endogenous levels of total TOP1MT protein.
Immunogen Type	Peptide
Immunogen Description	Synthetic peptide corresponding to a region derived from internal residues of human topoisomerase (DNA) I, mitochondrial
Target Name	TOP1MT
Other Names	TOP1M; TOP1MT; topoisomerase (DNA) I; mitochondrial
Accession No.	Swiss-Prot#: Q969P6NCBI Gene ID: 116447Gene Accssion: NP_001245375
Uniprot	Q969P6
GeneID	116447;
Concentration	0.5mg/ml
Formulation	Rabbit IgG in pH7.4 PBS, 0.05% NaN ₃ , 40% Glycerol.
Storage	Store at -20°C

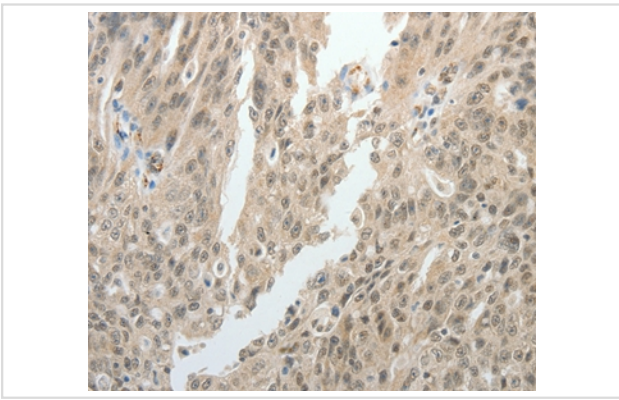
Application Details

Immunohistochemistry: 1:15-1:50

Images



Immunohistochemical analysis of paraffin-embedded Human ovarian cancer tissue using #37052 at dilution 1/15.



Immunohistochemical analysis of paraffin-embedded Human lung cancer tissue using #37052 at dilution 1/15.

Background

This gene encodes a mitochondrial DNA topoisomerase that plays a role in the modification of DNA topology. The encoded protein is a type IB topoisomerase and catalyzes the transient breaking and rejoining of DNA to relieve tension and DNA supercoiling generated in the mitochondrial genome during replication and transcription. Alternatively spliced transcript variants encoding multiple isoforms have been observed for this gene.

Note: This product is for in vitro research use only