

TRAF7 Antibody

Catalog No: #37054

Orders: order@signalwayantibody.comSupport: tech@signalwayantibody.com

Description

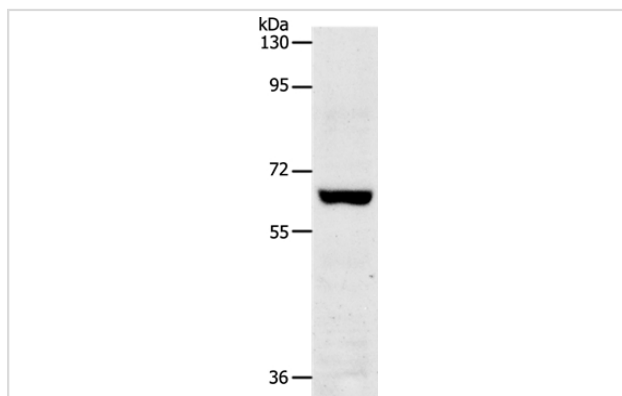
Product Name	TRAF7 Antibody
Host Species	Rabbit
Clonality	Polyclonal
Purification	Antigen affinity purification.
Applications	WB IHC
Species Reactivity	Hu
Specificity	The antibody detects endogenous levels of total TRAF7 protein.
Immunogen Type	Peptide
Immunogen Description	Synthetic peptide corresponding to a region derived from internal residues of human TNF receptor-associated factor 7, E3 ubiquitin protein ligase
Target Name	TRAF7
Other Names	RFWD1; RNF119
Accession No.	Swiss-Prot#: Q6Q0C0NCBI Gene ID: 84231Gene Accssion: NP_115647.2
Uniprot	Q6Q0C0
GeneID	84231;
SDS-PAGE MW	67kd
Concentration	0.7mg/ml
Formulation	Rabbit IgG in pH7.4 PBS, 0.05% NaN ₃ , 40% Glycerol.
Storage	Store at -20°C

Application Details

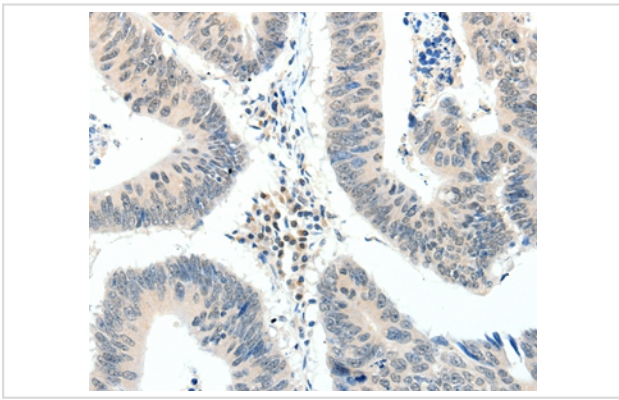
Western blotting: 1:200-1:1000

Immunohistochemistry: 1:15-1:50

Images



Gel: 8%SDS-PAGE
Lysate: 40ug Jurkat cell
Primary antibody: 1/300 dilution
Secondary antibody dilution: 1/8000
Exposure time: 2 minutes



Immunohistochemical analysis of paraffin-embedded Human colon cancer tissue using #37054 at dilution 1/20.

Background

Tumor necrosis factor (TNF; see MIM 191160) receptor-associated factors, such as TRAF7, are signal transducers for members of the TNF receptor superfamily (see MIM 191190). TRAFs are composed of an N-terminal cysteine/histidine-rich region containing zinc RING and/or zinc finger motifs; a coiled-coil (leucine zipper) motif; and a homologous region that defines the TRAF family, the TRAF domain, which is involved in self-association and receptor binding.

Note: This product is for in vitro research use only