

## TMSB10 Antibody

Catalog No: #37060

Orders: [order@signalwayantibody.com](mailto:order@signalwayantibody.com)Support: [tech@signalwayantibody.com](mailto:tech@signalwayantibody.com)

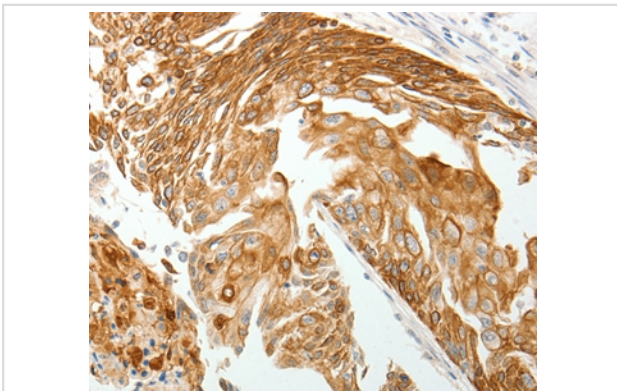
## Description

Product Name	TMSB10 Antibody
Host Species	Rabbit
Clonality	Polyclonal
Purification	Antigen affinity purification.
Applications	IHC
Species Reactivity	Hu Ms Rt
Specificity	The antibody detects endogenous levels of total TMSB10 protein.
Immunogen Type	Peptide
Immunogen Description	Synthetic peptide corresponding to residues near the C terminal of human thymosin beta 10
Target Name	TMSB10
Other Names	TB10; MIG12
Accession No.	Swiss-Prot#: P63313NCBI Gene ID: 9168Gene Accssion: NP_066926
Uniprot	P63313
GeneID	9168;
Concentration	0.5mg/ml
Formulation	Rabbit IgG in pH7.4 PBS, 0.05% NaN <sub>3</sub> , 40% Glycerol.
Storage	Store at -20°C

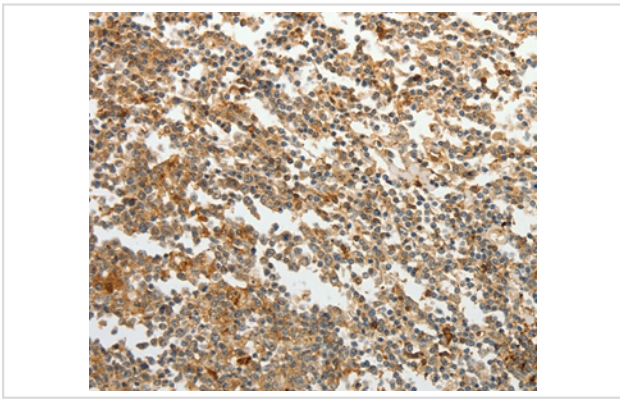
## Application Details

Immunohistochemistry: 1:25-1:100

## Images



Immunohistochemical analysis of paraffin-embedded Human tonsil cancer tissue using #37060 at dilution 1/15.



Immunohistochemical analysis of paraffin-embedded Human cervical cancer tissue using #37060 at dilution 1/15.

## Background

This protein plays an important role in the organization of the cytoskeleton. It binds to and sequesters actin monomers (G actin) and therefore inhibits actin polymerization. Experiment indicate that the expression decrease dramatically after birth. It expresses high levels in human fetal brain.

Note: This product is for in vitro research use only