

LPA5 Antibody

Catalog No: #37063

Orders: order@signalwayantibody.comSupport: tech@signalwayantibody.com

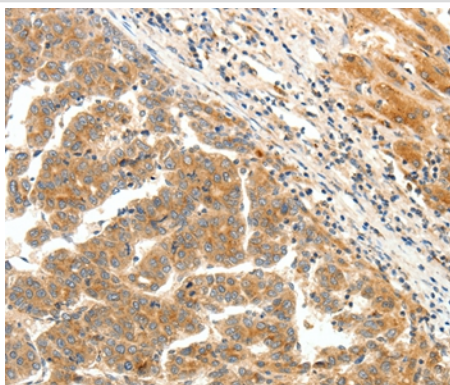
Description

Product Name	LPA5 Antibody
Host Species	Rabbit
Clonality	Polyclonal
Purification	Antigen affinity purification.
Applications	IHC
Species Reactivity	Hu
Specificity	The antibody detects endogenous levels of total LPA5 protein.
Immunogen Type	Peptide
Immunogen Description	Synthetic peptide corresponding to a region derived from internal residues of human lysophosphatidic acid receptor 5
Target Name	LPA5
Other Names	LPA5; GPR92; GPR93; KPG_010
Accession No.	Swiss-Prot#: Q9H1C0NCBI Gene ID: 57121Gene Accssion: NP_065133.1
Uniprot	Q9H1C0
GeneID	57121;
Concentration	0.8mg/ml
Formulation	Rabbit IgG in pH7.4 PBS, 0.05% NaN ₃ , 40% Glycerol.
Storage	Store at -20°C

Application Details

Immunohistochemistry: 1:25-1:100

Images



Immunohistochemical analysis of paraffin-embedded Human liver cancer tissue using #37063 at dilution 1/25.

Background

This gene encodes a member of the rhodopsin class of G protein-coupled transmembrane receptors. This protein transmits extracellular signals from lysophosphatidic acid to cells through heterotrimeric G proteins and mediates numerous cellular processes. Many G protein receptors serve as targets

for pharmaceutical drugs. Transcript variants of this gene have been described.

Note: This product is for in vitro research use only