

DOPEY1 Antibody

Catalog No: #37064

Orders: order@signalwayantibody.comSupport: tech@signalwayantibody.com

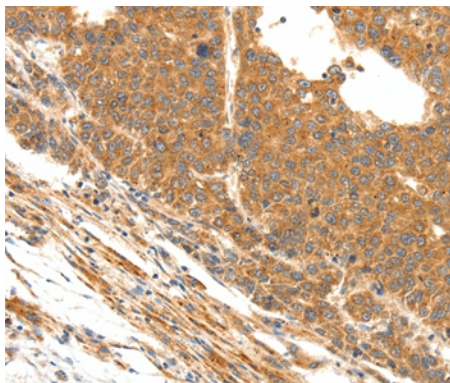
Description

Product Name	DOPEY1 Antibody
Host Species	Rabbit
Clonality	Polyclonal
Purification	Antigen affinity purification.
Applications	IHC
Species Reactivity	Hu Ms
Specificity	The antibody detects endogenous levels of total DOPEY1 protein.
Immunogen Type	Peptide
Immunogen Description	Synthetic peptide corresponding to a region derived from internal residues of human dopey family member 1
Target Name	DOPEY1
Other Names	KIAA1117; dJ202D23.2
Accession No.	Swiss-Prot#: Q5JWR5NCBI Gene ID: 23033Gene Accssion: NP_055833.2
Uniprot	Q5JWR5
GeneID	23033;
Concentration	0.8mg/ml
Formulation	Rabbit IgG in pH7.4 PBS, 0.05% NaN ₃ , 40% Glycerol.
Storage	Store at -20°C

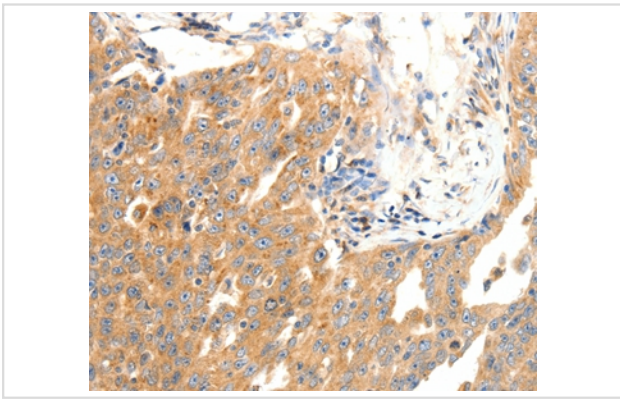
Application Details

Immunohistochemistry: 1:25-1:100

Images



Immunohistochemical analysis of paraffin-embedded Human ovarian cancer tissue using #37064 at dilution 1/25.



Immunohistochemical analysis of paraffin-embedded Human liver cancer tissue using #37064 at dilution 1/25.

Background

This gene belongs to the dopey family. It is a transporter protein, possibly involved in protein traffic between late Golgi and early endosomes. This gene plays a potential role in functional brain alterations and in the pathogenesis of mental retardation in Down syndrome, its overexpression in the brain regions, that are altered in Down syndrome patients and involved in learning and memory processes.

Note: This product is for in vitro research use only