

## FZD1 Antibody

Catalog No: #37067

Orders: order@signalwayantibody.com

Support: tech@signalwayantibody.com

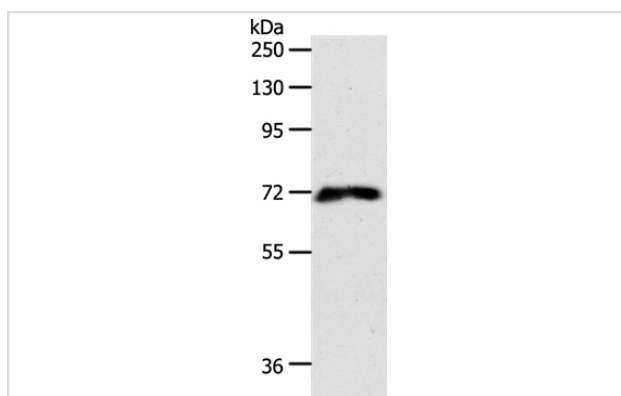
## Description

Product Name	FZD1 Antibody
Host Species	Rabbit
Clonality	Polyclonal
Purification	Antigen affinity purification.
Applications	WB
Species Reactivity	Hu
Specificity	The antibody detects endogenous levels of total FZD1 protein.
Immunogen Type	Peptide
Immunogen Description	Synthetic peptide corresponding to residues near the N terminal of human Frizzled family receptor 1
Target Name	FZD1
Other Names	DKFZp564G072; FLJ95923; Frizzled-1; Fz-1; FZD1; FzE1; hFz1; Wnt receptor
Accession No.	Swiss-Prot#: Q9UP38NCBI Gene ID: 8321Gene Accssion: NP_003496
Uniprot	Q9UP38
GeneID	8321;
SDS-PAGE MW	71kd
Concentration	1.1mg/ml
Formulation	Rabbit IgG in pH7.4 PBS, 0.05% NaN <sub>3</sub> , 40% Glycerol.
Storage	Store at -20°C

## Application Details

Western blotting: 1:200-1:1000

## Images



Gel: 8%SDS-PAGE  
 Lysate: 40ug 293T cell  
 Primary antibody: 1/500 dilution  
 Secondary antibody dilution: 1/8000  
 Exposure time: 1 minute

## Background

Members of the 'frizzled' gene family encode 7-transmembrane domain proteins that are receptors for Wnt signaling proteins. The FZD1 protein contains a signal peptide, a cysteine-rich domain in the N-terminal extracellular region, 7 transmembrane domains, and a C-terminal PDZ

domain-binding motif. The FZD1 transcript is expressed in various tissues. May be involved in transduction and intercellular transmission of polarity information during tissue morphogenesis and/or in differentiated tissues. Activated by Wnt3A, Wnt3, Wnt1 and to a lesser extent Wnt2, but not by Wnt4, Wnt5A, Wnt5B, Wnt6, Wnt7A or Wnt7B.

---

Note: This product is for in vitro research use only