

FZD2 Antibody

Catalog No: #37068

Orders: order@signalwayantibody.com

Support: tech@signalwayantibody.com

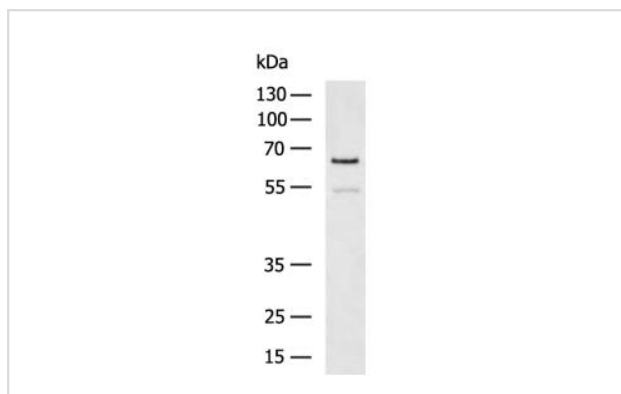
Description

Product Name	FZD2 Antibody
Host Species	Rabbit
Clonality	Polyclonal
Purification	Antigen affinity purification.
Applications	WB
Species Reactivity	Hu Rt
Specificity	The antibody detects endogenous levels of total FZD2 protein.
Immunogen Type	Peptide
Immunogen Description	Synthetic peptide corresponding to a region derived from internal residues of human Frizzled family receptor 2
Target Name	FZD2
Other Names	Fz2; fz-2; fzE2; hFz2
Accession No.	Swiss-Prot#: Q14332NCBI Gene ID: 2535Gene Accssion: NP_001457
Uniprot	Q14332
GeneID	2535;
SDS-PAGE MW	64kd
Concentration	1.1mg/ml
Formulation	Rabbit IgG in pH7.4 PBS, 0.05% NaN ₃ , 40% Glycerol.
Storage	Store at -20°C

Application Details

Western blotting: 1:200-1:1000

Images



Gel: 8%SDS-PAGE

Lysate: 40 ug

Lane: HT-29 cell lysate

Primary antibody: (FZD2 Antibody) at dilution 1/1200

Secondary antibody: (HRP-conjugated Goat anti rabbit IgG) at 1/5000 dilution

Exposure time: 2 minutes

Background

This intronless gene is a member of the frizzled gene family. Members of this family encode seven-transmembrane domain proteins that are receptors for the wingless type MMTV integration site family of signaling proteins. This gene encodes a protein that is coupled to the beta-catenin canonical

signaling pathway. Competition between the wingless-type MMTV integration site family, member 3A and wingless-type MMTV integration site family, member 5A gene products for binding of this protein is thought to regulate the beta-catenin-dependent and -independent pathways.

Note: This product is for in vitro research use only