

FZD3 Antibody

Catalog No: #37069

Orders: order@signalwayantibody.comSupport: tech@signalwayantibody.com

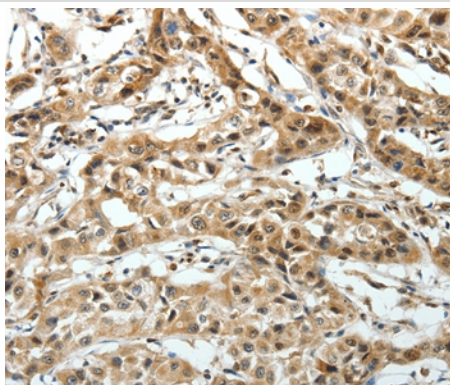
Description

Product Name	FZD3 Antibody
Host Species	Rabbit
Clonality	Polyclonal
Purification	Antigen affinity purification.
Applications	IHC
Species Reactivity	Hu
Specificity	The antibody detects endogenous levels of total FZD3 protein.
Immunogen Type	Peptide
Immunogen Description	Synthetic peptide corresponding to a region derived from internal residues of human frizzled family receptor 3
Target Name	FZD3
Other Names	Fz-3
Accession No.	Swiss-Prot#: Q9NPG1NCBI Gene ID: 7976Gene Accssion: NP_059108.1
Uniprot	Q9NPG1
GeneID	7976;
Concentration	0.7mg/ml
Formulation	Rabbit IgG in pH7.4 PBS, 0.05% NaN ₃ , 40% Glycerol.
Storage	Store at -20°C

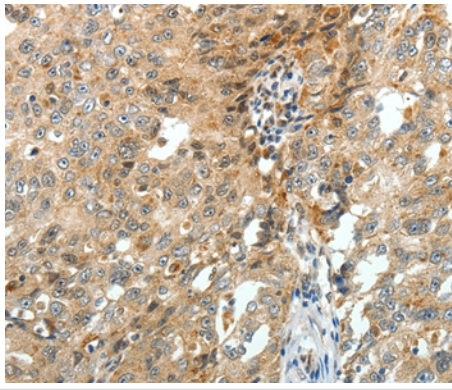
Application Details

Immunohistochemistry: 1:25-1:100

Images



Immunohistochemical analysis of paraffin-embedded Human lung cancer tissue using #37069 at dilution 1/20.



Immunohistochemical analysis of paraffin-embedded Human ovarian cancer tissue using #37069 at dilution 1/20.

Background

This gene is a member of the frizzled gene family. Members of this family encode seven-transmembrane domain proteins that are receptors for the wingless type MMTV integration site family of signaling proteins. Most frizzled receptors are coupled to the beta-catenin canonical signaling pathway. The function of this protein is unknown, although it may play a role in mammalian hair follicle development. Alternative splicing results in multiple transcript variants. This gene is a susceptibility locus for schizophrenia.

Note: This product is for in vitro research use only